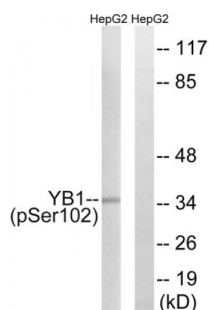


Abbexa Ltd, Innovation Centre, Cambridge Science Park, Cambridge, CB4 0EY, UK
Telephone: +44 (0) 1223 755950 - Fax: +44 (0) 1223 755951 - E-Mail: info@abbexa.com

YB1 (Phospho-Ser102) Antibody

Catalogue No.: abx012717



Western blot analysis of extracts from HepG2 cells, treated with PMA (125 ng/ml, 15 min), using YB1 (Phospho-Ser102) antibody.

Rabbit polyclonal antibody against YB1 protein. Immunogen region is Internal. Specificity is as follows for the reactive species: H:S102, M:S100, R:S100.

Target: YB1

Reactivity: Human, Mouse, Rat

Host: Rabbit

Clonality: Polyclonal

Tested Applications: ELISA, WB

Recommended dilutions: WB: 1/500 - 1/3000, ELISA: 1/40000. Optimal dilutions/concentrations should be determined by the end user.

Immunogen: The antiserum was produced against synthesized phosphopeptide derived from human YB1 around the phosphorylation site of serine 102 (L-R-S(P)-V-G).

Purification: Purified from rabbit antiserum by affinity chromatography using epitope-specific phosphopeptide. The antibody against non-phosphopeptide was removed by chromatography using non-phosphopeptide corresponding to the phosphorylation site.

Form: Liquid

Isotype: IgG

Conjugation: Unconjugated

Specificity: Detects endogenous levels of YB1 only when phosphorylated at serine 102.

Storage: Aliquot and store at -20 °C. Avoid repeated freeze/thaw cycles.

Swiss Prot: [P67809](#)

Abbexa Ltd, Innovation Centre, Cambridge Science Park, Cambridge, CB4 0EY, UK
Telephone: +44 (0) 1223 755950 - Fax: +44 (0) 1223 755951 - E-Mail: info@abbexa.com

Concentration: 1 mg/ml

Buffer: PBS (without Mg^{2+} and Ca^{2+}), pH 7.4, 150 mM NaCl, 0.02% sodium azide, 50% glycerol.

Note: This product is for research use only.