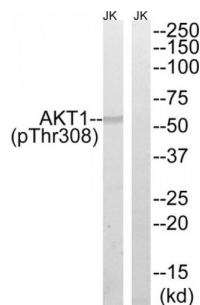


Abbexa Ltd, Innovation Centre, Cambridge Science Park, Cambridge, CB4 0EY, UK  
Telephone: +44 (0) 1223 755950 - Fax: +44 (0) 1223 755951 - E-Mail: [info@abbexa.com](mailto:info@abbexa.com)

## RAC-Alpha Serine/Threonine-Protein Kinase (AKT1) Antibody

Catalogue No.: abx012718



Western blot analysis of extracts from Jurkat cells, treated with EGF (200ng/ml, 5mins), using AKT1 Phospho-Thr308) antibody.

Rabbit polyclonal antibody against AKT1 protein. Immunogen region is Internal. Specificity is as follows for the reactive species: H:T308, M:T308, R:T308.

<b>Target:</b>	AKT1
<b>Reactivity:</b>	Human, Mouse, Rat
<b>Host:</b>	Rabbit
<b>Clonality:</b>	Polyclonal
<b>Tested Applications:</b>	ELISA, WB
<b>Recommended dilutions:</b>	WB: 1/500 - 1/3000, ELISA: 1/40000. Optimal dilutions/concentrations should be determined by the end user.
<b>Immunogen:</b>	The antiserum was produced against synthesized phosphopeptide derived from human AKT1 around the phosphorylation site of threonine 308 (M-K-TP-F-C).
<b>Purification:</b>	Purified from rabbit antiserum by affinity chromatography using epitope-specific immunogen.
<b>Form:</b>	Liquid
<b>Isotype:</b>	IgG
<b>Conjugation:</b>	Unconjugated
<b>Storage:</b>	Aliquot and store at -20 °C. Avoid repeated freeze/thaw cycles.
<b>Swiss Prot:</b>	<a href="#">P31749</a>
<b>Enzyme Commission Number:</b>	EC 2.7.11.1

Abbexa Ltd, Innovation Centre, Cambridge Science Park, Cambridge, CB4 0EY, UK  
Telephone: +44 (0) 1223 755950 - Fax: +44 (0) 1223 755951 - E-Mail: [info@abbexa.com](mailto:info@abbexa.com)

**Buffer:** PBS (without  $Mg^{2+}$  and  $Ca^{2+}$ ), pH 7.4, 150 mM NaCl, 0.02% sodium azide, 50% glycerol.

**Note:** This product is for research use only.