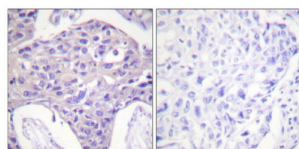


Abbexa Ltd, Innovation Centre, Cambridge Science Park, Cambridge, CB4 0EY, UK
Telephone: +44 (0) 1223 755950 - Fax: +44 (0) 1223 755951 - E-Mail: info@abbexa.com

FOXO1 / 3 / 4-pan Antibody

Catalogue No.: abx012777



Immunohistochemistry analysis of paraffin-embedded human breast carcinoma tissue, using FOXO1/3/4-pan antibody.

Rabbit polyclonal antibody against FOXO1/3/4-pan protein. Immunogen region is N-terminal.

Target: FOXO1/3/4-pan

Reactivity: Human, Mouse, Rat

Host: Rabbit

Clonality: Polyclonal

Tested Applications: ELISA, IHC

Recommended dilutions: IHC: 1/50 - 1/100, ELISA: 1/1000. Optimal dilutions/concentrations should be determined by the end user.

Immunogen: The antiserum was produced against synthesized non-phosphopeptide derived from human FOXO1/3/4-pan around the phosphorylation site of threonine 24/32 (S-C-TP-W-P).

Purification: Purified from rabbit antiserum by affinity chromatography using epitope-specific immunogen.

Form: Liquid

Isotype: IgG

Conjugation: Unconjugated

Storage: Aliquot and store at -20 °C. Avoid repeated freeze/thaw cycles.

Swiss Prot: [Q12778](#) [O43524](#) [P98177](#)

Buffer: PBS (without Mg^{2+} and Ca^{2+}), pH 7.4, 150 mM NaCl, 0.02% sodium azide, 50% glycerol.

Note: This product is for research use only.