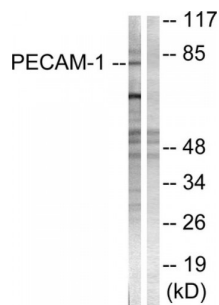


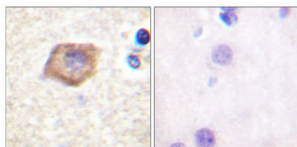
Abbexa Ltd, Innovation Centre, Cambridge Science Park, Cambridge, CB4 0EY, UK  
Telephone: +44 (0) 1223 755950 - Fax: +44 (0) 1223 755951 - E-Mail: info@abbexa.com

## Platelet Endothelial Cell Adhesion Molecule (PECAM-1) Antibody

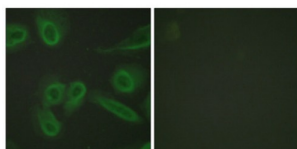
Catalogue No.: abx012786



Western blot analysis of extracts from Jurkat cells, using PECAM-1 (epitope around residue 713) antibody.



Immunohistochemistry analysis of paraffin-embedded human brain tissue, using PECAM-1 (epitope around residue 713) antibody.



Immunofluorescence analysis of HeLa cells, using PECAM-1 (epitope around residue 713) antibody.

Rabbit polyclonal antibody against PECAM-1 protein. Immunogen region is C-terminal.

**Target:** PECAM-1

**Reactivity:** Human, Mouse

**Host:** Rabbit

**Clonality:** Polyclonal

**Tested Applications:** ELISA, WB

**Recommended dilutions:** WB: 1/500 - 1/3000, IHC: 1/50 - 1/100, IF/ICC: 1/100 - 1/500, ELISA: 1/20000. Optimal dilutions/concentrations should be determined by the end user.

**Immunogen:** The antiserum was produced against synthesized non-phosphopeptide derived from human PECAM-1 around the phosphorylation site of tyrosine 713 (T-V-YP-S-E).

Abbexa Ltd, Innovation Centre, Cambridge Science Park, Cambridge, CB4 0EY, UK  
Telephone: +44 (0) 1223 755950 - Fax: +44 (0) 1223 755951 - E-Mail: [info@abbexa.com](mailto:info@abbexa.com)

<b>Purification:</b>	Purified from rabbit antiserum by affinity chromatography using epitope-specific immunogen.
<b>Form:</b>	Liquid
<b>Isotype:</b>	IgG
<b>Conjugation:</b>	Unconjugated
<b>Storage:</b>	Aliquot and store at -20 °C. Avoid repeated freeze/thaw cycles.
<b>Swiss Prot:</b>	<a href="#">P16284</a>
<b>Buffer:</b>	PBS (without $Mg^{2+}$ and $Ca^{2+}$ ), pH 7.4, 150 mM NaCl, 0.02% sodium azide, 50% glycerol.
<b>Note:</b>	This product is for research use only.