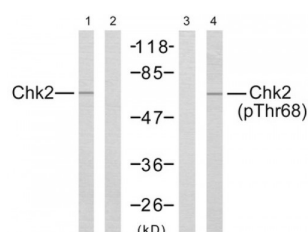


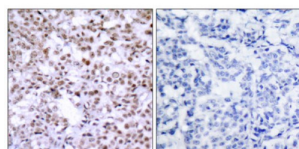
Abbexa Ltd, Innovation Centre, Cambridge Science Park, Cambridge, CB4 0EY, UK  
Telephone: +44 (0) 1223 755950 - Fax: +44 (0) 1223 755951 - E-Mail: info@abbexa.com

## Serine/threonine-Protein Kinase Chk2 (CHK2) Antibody

Catalogue No.: abx012850



Western blot analysis of the extracts from Jurkat cells using Chk2 (epitope around residue 68) antibody (Line 1 and 2) and Chk2 (phospho-Thr68) antibody (Line 3 and 4).



Immunohistochemical analysis of paraffin-embedded human breast carcinoma tissue using Chk2 (epitope around residue 68) antibody (abx012850).

Rabbit polyclonal antibody against Chk2 protein. Immunogen region is N-terminal.

**Target:** Chk2

**Reactivity:** Human, Mouse, Rat

**Host:** Rabbit

**Clonality:** Polyclonal

**Tested Applications:** ELISA, WB, IHC

**Recommended dilutions:** WB: 1/500 - 1/3000, IHC: 1/50 - 1/100, ELISA: 1/10000. Optimal dilutions/concentrations should be determined by the end user.

**Immunogen:** The antiserum was produced against synthesized non-phosphopeptide derived from human Chk2 around the phosphorylation site of threonine 68.

**Purification:** Purified from rabbit antiserum by affinity chromatography using epitope-specific immunogen.

**Form:** Liquid

**Isotype:** IgG

**Conjugation:** Unconjugated

Abbexa Ltd, Innovation Centre, Cambridge Science Park, Cambridge, CB4 0EY, UK  
Telephone: +44 (0) 1223 755950 - Fax: +44 (0) 1223 755951 - E-Mail: [info@abbexa.com](mailto:info@abbexa.com)

**Storage:** Aliquot and store at -20 °C. Avoid repeated freeze/thaw cycles.

**Swiss Prot:** [O96017](#)

**Buffer:** PBS (without  $Mg^{2+}$  and  $Ca^{2+}$ ), pH 7.4, 150 mM NaCl, 0.02% sodium azide, 50% glycerol.

**Note:** This product is for research use only.