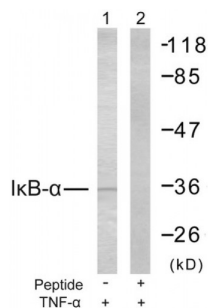


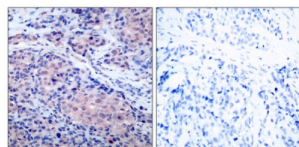
Abbexa Ltd, Innovation Centre, Cambridge Science Park, Cambridge, CB4 0EY, UK  
Telephone: +44 (0) 1223 755950 - Fax: +44 (0) 1223 755951 - E-Mail: info@abbexa.com

## Ik B Alpha (IKBA) Antibody

Catalogue No.: abx012862



Western blot analysis of extracts from MCF7 cells treated with TNF- alpha. Line1: Using I alpha B- alpha (epitope around residue 32/36) Antibody (abx012862) ; Line2. The same antibody pre- incubated with synthesized peptide.



Immunohistochemical analysis of paraffin-embedded breast carcinoma, using I alpha B- alpha (epitope around residue 32/36) Antibody (abx012862). Left: Untreated; Right: Treated with synthesized peptide.

Rabbit polyclonal antibody against I kappa B alpha protein. Immunogen region is N-terminal.

**Target:** Ik B alpha

**Reactivity:** Human, Mouse, Rat

**Host:** Rabbit

**Clonality:** Polyclonal

**Tested Applications:** ELISA, WB, IHC

**Recommended dilutions:** WB: 1/500 - 1/3000, IHC: 1/50 - 1/100, ELISA: 1/10000. Optimal dilutions/concentrations should be determined by the end user.

**Immunogen:** The antiserum was produced against synthesized non-phosphopeptide derived from human I kappa B alpha around the phosphorylation site of Serine 32/36.

**Purification:** Purified from rabbit antiserum by affinity chromatography using epitope-specific immunogen.

**Form:** Liquid

**Isotype:** IgG

**Conjugation:** Unconjugated

Abbexa Ltd, Innovation Centre, Cambridge Science Park, Cambridge, CB4 0EY, UK  
Telephone: +44 (0) 1223 755950 - Fax: +44 (0) 1223 755951 - E-Mail: [info@abbexa.com](mailto:info@abbexa.com)

**Storage:** Aliquot and store at -20 °C. Avoid repeated freeze/thaw cycles.

**Swiss Prot:** [P25963](#)

**Buffer:** PBS (without  $Mg^{2+}$  and  $Ca^{2+}$ ), pH 7.4, 150 mM NaCl, 0.02% sodium azide, 50% glycerol.

**Note:** This product is for research use only.