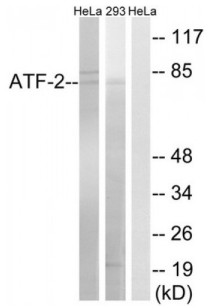


Activating Transcription Factor 2 (ATF2) Antibody

Catalogue No.: abx012966



Western blot analysis of extracts from HeLa cells and 293 cells, using ATF2 (epitope around residue 472) antibody.

Rabbit polyclonal antibody against ATF2 protein. Immunogen region is C-terminal.

Target:	ATF2
Reactivity:	Human, Mouse, Rat
Host:	Rabbit
Clonality:	Polyclonal
Tested Applications:	ELISA, WB
Recommended dilutions:	WB: 1/500 - 1/3000, ELISA: 1/20000. Optimal dilutions/concentrations should be determined by the end user.
Immunogen:	The antiserum was produced against synthesized non-phosphopeptide derived from human ATF-2 around the phosphorylation site of serine 472 (A-L-SP-Q-I).
Purification:	Purified from rabbit antiserum by affinity chromatography using epitope-specific immunogen.
Form:	Liquid
Isotype:	IgG
Conjugation:	Unconjugated
Storage:	Aliquot and store at -20 °C. Avoid repeated freeze/thaw cycles.
Swiss Prot:	P15336
Buffer:	PBS (without Mg ²⁺ and Ca ²⁺), pH 7.4, 150 mM NaCl, 0.02% sodium azide, 50% glycerol.
Note:	This product is for research use only.