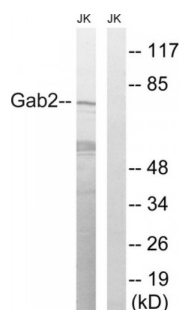


Abbexa Ltd, Innovation Centre, Cambridge Science Park, Cambridge, CB4 0EY, UK
Telephone: +44 (0) 1223 755950 - Fax: +44 (0) 1223 755951 - E-Mail: info@abbexa.com

GRB2-Associated-Binding Protein 2 (GAB2) Antibody

Catalogue No.: abx012976



Western blot analysis of extracts from Jurkat cells, treated with TNF (2500U/ml, 30mins), using Gab2 (epitope around residue 623) antibody.

Rabbit polyclonal antibody against Gab2 protein. Immunogen region is C-terminal.

Target:	Gab2
Reactivity:	Human, Mouse, Rat
Host:	Rabbit
Clonality:	Polyclonal
Tested Applications:	ELISA, WB
Recommended dilutions:	WB: 1/500 - 1/3000, ELISA: 1/40000. Optimal dilutions/concentrations should be determined by the end user.
Immunogen:	The antiserum was produced against synthesized non-phosphopeptide derived from human Gab2 around the phosphorylation site of serine 623 (P-S-SP-P-S).
Purification:	Purified from rabbit antiserum by affinity chromatography using epitope-specific immunogen.
Form:	Liquid
Isotype:	IgG
Conjugation:	Unconjugated
Storage:	Aliquot and store at -20 °C. Avoid repeated freeze/thaw cycles.
Swiss Prot:	Q9UQC2
Buffer:	PBS (without Mg^{2+} and Ca^{2+}), pH 7.4, 150 mM NaCl, 0.02% sodium azide, 50% glycerol.
Note:	This product is for research use only.