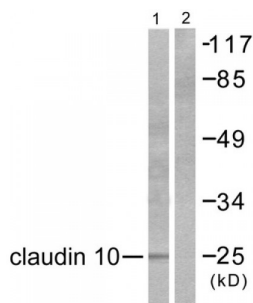


Abbexa Ltd, Innovation Centre, Cambridge Science Park, Cambridge, CB4 0EY, UK  
Telephone: +44 (0) 1223 755950 - Fax: +44 (0) 1223 755951 - E-Mail: info@abbexa.com

## Claudin 10 (CLDN10) Antibody

Catalogue No.: abx013039



Rabbit polyclonal antibody against Claudin 10 protein. Immunogen region is C-terminal.

**Target:** Claudin 10

**Reactivity:** Human, Mouse

**Host:** Rabbit

**Clonality:** Polyclonal

**Tested Applications:** ELISA, WB

**Recommended dilutions:** Optimal dilutions/concentrations should be determined by the end user.

**Immunogen:** The antiserum was produced against synthesized peptide derived from C-terminal of human Claudin 10.

**Purification:** Purified from rabbit antiserum by affinity chromatography using epitope-specific immunogen.

**Form:** Liquid

**Isotype:** IgG

**Conjugation:** Unconjugated

**Storage:** Aliquot and store at -20 °C. Avoid repeated freeze/thaw cycles.

**Swiss Prot:** [P78369](#)

**Buffer:** PBS (without Mg<sup>2+</sup> and Ca<sup>2+</sup>), pH 7.4, 150 mM NaCl, 0.02% sodium azide, 50% glycerol.

**Note:** This product is for research use only.