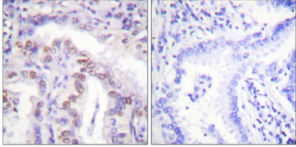


SUMO Specific Peptidase 6 (SEN6) Antibody

Catalogue No.: abx013230



Immunohistochemistry analysis of paraffin-embedded human lung carcinoma tissue, using SENP6 antibody.

Rabbit polyclonal antibody against SENP6 protein. Immunogen region is C-terminal.

Target:	SEN6
Reactivity:	Human
Host:	Rabbit
Clonality:	Polyclonal
Tested Applications:	ELISA, IHC
Recommended dilutions:	IHC: 1/50 - 1/100, ELISA: 1/10000. Optimal dilutions/concentrations should be determined by the end user.
Immunogen:	The antiserum was produced against synthesized peptide derived from C-terminal of human SENP6.
Purification:	Purified from rabbit antiserum by affinity chromatography using epitope-specific immunogen.
Form:	Liquid
Isotype:	IgG
Conjugation:	Unconjugated
Storage:	Aliquot and store at -20 °C. Avoid repeated freeze/thaw cycles.
Swiss Prot:	Q9GZR1
Enzyme Commission Number:	EC 3.4.22.-
Buffer:	PBS (without Mg ²⁺ and Ca ²⁺), pH 7.4, 150 mM NaCl, 0.02% sodium azide, 50% glycerol.

Abbexa Ltd, Innovation Centre, Cambridge Science Park, Cambridge, CB4 0EY, UK
Telephone: +44 (0) 1223 755950 - Fax: +44 (0) 1223 755951 - E-Mail: info@abbexa.com

Note: This product is for research use only.