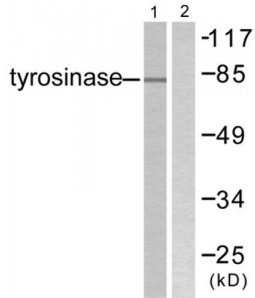


Tyrosinase (TYR) Antibody

Catalogue No.: abx013242



Western blot analysis of extracts from COS7 cells, treated with UV (30mins), using Tyrosinase antibody.

Rabbit polyclonal antibody against Tyrosinase protein. Immunogen region is C-terminal.

Target:	Tyrosinase
Reactivity:	Human
Host:	Rabbit
Clonality:	Polyclonal
Tested Applications:	ELISA, WB
Recommended dilutions:	WB: 1/500 - 1/3000, ELISA: 1/10000. Optimal dilutions/concentrations should be determined by the end user.
Immunogen:	The antiserum was produced against synthesized peptide derived from C-terminal of human tyrosinase.
Purification:	Purified from rabbit antiserum by affinity chromatography using epitope-specific immunogen.
Form:	Liquid
Isotype:	IgG
Conjugation:	Unconjugated
Storage:	Aliquot and store at -20 °C. Avoid repeated freeze/thaw cycles.
Swiss Prot:	P14679
Enzyme Commission Number:	EC 1.14.18.1
Buffer:	PBS (without Mg ²⁺ and Ca ²⁺), pH 7.4, 150 mM NaCl, 0.02% sodium azide, 50% glycerol.

Abbexa Ltd, Innovation Centre, Cambridge Science Park, Cambridge, CB4 0EY, UK
Telephone: +44 (0) 1223 755950 - Fax: +44 (0) 1223 755951 - E-Mail: info@abbexa.com

Note: This product is for research use only.