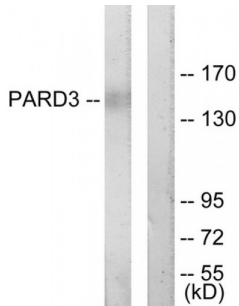
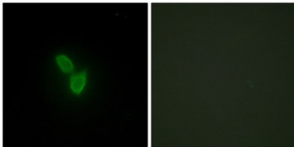


Par-3 Partitioning Defective 3 Homolog (PARD3) Antibody

Catalogue No.: abx013719



Western blot analysis of extracts from COLO205 cells, using PARD3 antibody.



Immunofluorescence analysis of HepG2 cells, using PARD3 antibody.

Rabbit polyclonal antibody against PARD3 protein. Immunogen region is C-terminal.

Target: PARD3**Reactivity:** Human, Mouse, Rat**Host:** Rabbit**Clonality:** Polyclonal**Tested Applications:** ELISA, WB, IF/ICC**Recommended dilutions:** WB: 1/500 - 1/3000, IF/ICC: 1/100 - 1/500, ELISA: 1/20000. Optimal dilutions/concentrations should be determined by the end user.**Immunogen:** The antiserum was produced against synthesized peptide derived from C-terminal of human PARD3.**Purification:** Purified from rabbit antiserum by affinity chromatography using epitope-specific immunogen.**Form:** Liquid**Isotype:** IgG**Conjugation:** Unconjugated

Abbexa Ltd, Innovation Centre, Cambridge Science Park, Cambridge, CB4 0EY, UK
Telephone: +44 (0) 1223 755950 - Fax: +44 (0) 1223 755951 - E-Mail: info@abbexa.com

Storage: Aliquot and store at -20 °C. Avoid repeated freeze/thaw cycles.

Swiss Prot: [Q8TEW0](#)

Buffer: PBS (without Mg²⁺ and Ca²⁺), pH 7.4, 150 mM NaCl, 0.02% sodium azide, 50% glycerol.

Note: This product is for research use only.