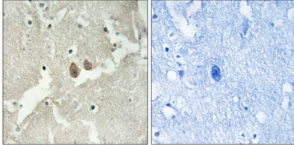


Neuronal Vesicle Trafficking Associated 2 (NSG2) Antibody

Catalogue No.: abx014662



Immunohistochemistry analysis of paraffin-embedded human brain tissue using NSG2 antibody.

Rabbit polyclonal antibody against NSG2 protein. Immunogen region is Internal.

Target:	NSG2
Reactivity:	Human, Mouse
Host:	Rabbit
Clonality:	Polyclonal
Tested Applications:	ELISA, IHC
Recommended dilutions:	IHC: 1/50 - 1/100, ELISA: 1/20000. Optimal dilutions/concentrations should be determined by the end user.
Immunogen:	The antiserum was produced against synthesized peptide derived from internal of human NSG2.
Purification:	Purified from rabbit antiserum by affinity chromatography using epitope-specific immunogen.
Form:	Liquid
Isotype:	IgG
Conjugation:	Unconjugated
Storage:	Aliquot and store at -20 °C. Avoid repeated freeze/thaw cycles.
Swiss Prot:	Q9Y328
Buffer:	PBS (without Mg ²⁺ and Ca ²⁺), pH 7.4, 150 mM NaCl, 0.02% sodium azide, 50% glycerol.
Note:	This product is for research use only.