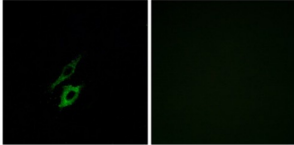


Abbexa Ltd, Innovation Centre, Cambridge Science Park, Cambridge, CB4 0EY, UK  
Telephone: +44 (0) 1223 755950 - Fax: +44 (0) 1223 755951 - E-Mail: info@abbexa.com

## Formyl Peptide Receptor 1 (FPR1) Antibody

Catalogue No.: abx015280



Immunofluorescence analysis of A549 cells, using FPR1 antibody.

Rabbit polyclonal antibody against FPR1 protein. Immunogen region is Internal.

<b>Target:</b>	FPR1
<b>Reactivity:</b>	Human
<b>Host:</b>	Rabbit
<b>Clonality:</b>	Polyclonal
<b>Tested Applications:</b>	ELISA, IF/ICC
<b>Recommended dilutions:</b>	IF/ICC: 1/100 - 1/500, ELISA: 1/40000. Optimal dilutions/concentrations should be determined by the end user.
<b>Immunogen:</b>	The antiserum was produced against synthesized peptide derived from internal of human FPR1.
<b>Purification:</b>	Purified from rabbit antiserum by affinity chromatography using epitope-specific immunogen.
<b>Form:</b>	Liquid
<b>Isotype:</b>	IgG
<b>Conjugation:</b>	Unconjugated
<b>Storage:</b>	Aliquot and store at -20 °C. Avoid repeated freeze/thaw cycles.
<b>Swiss Prot:</b>	<a href="#">P21462</a>
<b>Buffer:</b>	PBS (without Mg <sup>2+</sup> and Ca <sup>2+</sup> ), pH 7.4, 150 mM NaCl, 0.02% sodium azide, 50% glycerol.
<b>Note:</b>	This product is for research use only.