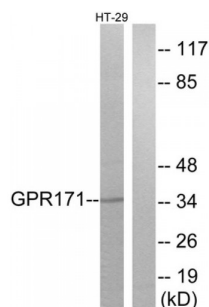


Abbexa Ltd, Innovation Centre, Cambridge Science Park, Cambridge, CB4 0EY, UK  
Telephone: +44 (0) 1223 755950 - Fax: +44 (0) 1223 755951 - E-Mail: [info@abbexa.com](mailto:info@abbexa.com)

## Probable G-Protein Coupled Receptor 171 (GPR171) Antibody

Catalogue No.: abx015312



Western blot analysis of extracts from HT-29 cells, using GPR171 antibody.

Rabbit polyclonal antibody against GPR171 protein. Immunogen region is Internal.

**Target:** GPR171

**Reactivity:** Human

**Host:** Rabbit

**Clonality:** Polyclonal

**Tested Applications:** ELISA, WB

**Recommended dilutions:** WB: 1/500 - 1/3000, ELISA: 1/10000. Optimal dilutions/concentrations should be determined by the end user.

**Immunogen:** The antiserum was produced against synthesized peptide derived from internal of human GPR171.

**Purification:** Purified from rabbit antiserum by affinity chromatography using epitope-specific immunogen.

**Form:** Liquid

**Isotype:** IgG

**Conjugation:** Unconjugated

**Storage:** Aliquot and store at -20 °C. Avoid repeated freeze/thaw cycles.

**Swiss Prot:** [O14626](#)

**Buffer:** PBS (without  $Mg^{2+}$  and  $Ca^{2+}$ ), pH 7.4, 150 mM NaCl, 0.02% sodium azide, 50% glycerol.

**Note:** This product is for research use only.