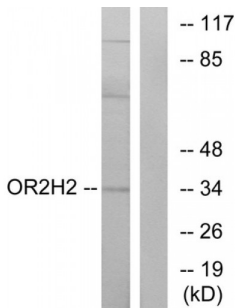


Olfactory Receptor 2H2 (OR2H2) Antibody

Catalogue No.: abx015415



Western blot analysis of extracts from MCF-7 cells, using OR2H2 antibody.

Rabbit polyclonal antibody against OR2H2 protein. Immunogen region is C-terminal.

| | |
|-------------------------------|--|
| Target: | OR2H2 |
| Reactivity: | Human |
| Host: | Rabbit |
| Clonality: | Polyclonal |
| Tested Applications: | ELISA, WB |
| Recommended dilutions: | WB: 1/500 - 1/3000, ELISA: 1/10000. Optimal dilutions/concentrations should be determined by the end user. |
| Immunogen: | The antiserum was produced against synthesized peptide derived from C-terminal of human OR2H2. |
| Purification: | Purified from rabbit antiserum by affinity chromatography using epitope-specific immunogen. |
| Form: | Liquid |
| Isotype: | IgG |
| Conjugation: | Unconjugated |
| Storage: | Aliquot and store at -20 °C. Avoid repeated freeze/thaw cycles. |
| Swiss Prot: | O95918 Q2M1Y3 Q5SUK1 |
| Buffer: | PBS (without Mg ²⁺ and Ca ²⁺), pH 7.4, 150 mM NaCl, 0.02% sodium azide, 50% glycerol. |
| Note: | This product is for research use only. |