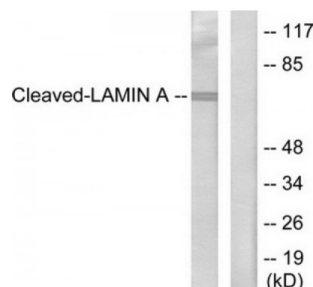


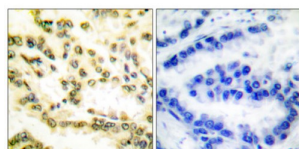
Abbexa Ltd, Innovation Centre, Cambridge Science Park, Cambridge, CB4 0EY, UK  
Telephone: +44 (0) 1223 755950 - Fax: +44 (0) 1223 755951 - E-Mail: info@abbexa.com

## Lamin A (Cleaved-Asp230) Antibody

Catalogue No.: abx015542



Western blot analysis of extracts from HeLa cells, treated with etoposide (25  $\mu$ M, 1hour), using Lamin A (cleaved-Asp230) antibody.



Immunohistochemical analysis of paraffin-embedded human lung carcinoma tissue, using Lamin A (cleaved-Asp230) antibody.

Rabbit polyclonal antibody against Lamin A protein. Immunogen region is Internal. Specificity is as follows for the reactive species: H:D230, M:D230, R:D229.

**Target:** Lamin A

**Reactivity:** Human, Mouse, Rat

**Host:** Rabbit

**Clonality:** Polyclonal

**Tested Applications:** ELISA, WB, IHC

**Recommended dilutions:** Optimal dilutions/concentrations should be determined by the end user.

**Immunogen:** The antiserum was produced against synthesized peptide derived from Internal of human Lamin A (Cleaved-Asp230).

**Purification:** Purified from rabbit antiserum by affinity chromatography using epitope-specific immunogen.

**Form:** Liquid

**Isotype:** IgG

Abbexa Ltd, Innovation Centre, Cambridge Science Park, Cambridge, CB4 0EY, UK  
Telephone: +44 (0) 1223 755950 - Fax: +44 (0) 1223 755951 - E-Mail: [info@abbexa.com](mailto:info@abbexa.com)

**Conjugation:** Unconjugated

**Storage:** Aliquot and store at -20 °C. Avoid repeated freeze/thaw cycles.

**Swiss Prot:** [P02545](#)

**Buffer:** PBS (without  $Mg^{2+}$  and  $Ca^{2+}$ ), pH 7.4, 150 mM NaCl, 0.02% sodium azide, 50% glycerol.

**Note:** This product is for research use only.