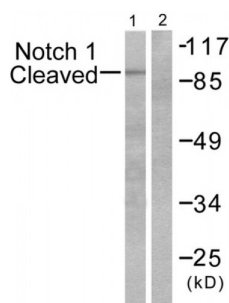


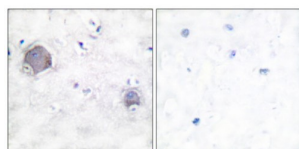
Abbexa Ltd, Innovation Centre, Cambridge Science Park, Cambridge, CB4 0EY, UK
Telephone: +44 (0) 1223 755950 - Fax: +44 (0) 1223 755951 - E-Mail: info@abbexa.com

Notch 1 (Cleaved-Val1754) Antibody

Catalogue No.: abx015544



Western blot analysis of extracts from NIH/3T3 cells, treated with etoposide (25 μ M, 1hour), using Notch 1 (cleaved-Val1744) antibody.



Immunohistochemical analysis of paraffin-embedded human brain tissue, using Notch 1 (cleaved-Val1744) antibody.

Rabbit polyclonal antibody against Notch 1 protein. Immunogen region is Internal. Specificity is as follows for the reactive species: H:V1754, M:V1744, R:V1744.

Target: Notch 1

Reactivity: Human, Mouse, Rat

Host: Rabbit

Clonality: Polyclonal

Tested Applications: ELISA, WB, IHC

Recommended dilutions: Optimal dilutions/concentrations should be determined by the end user.

Immunogen: The antiserum was produced against synthesized peptide derived from Internal of human Notch 1 (Cleaved-Val1754).

Purification: Purified from rabbit antiserum by affinity chromatography using epitope-specific immunogen.

Form: Liquid

Isotype: IgG

Abbexa Ltd, Innovation Centre, Cambridge Science Park, Cambridge, CB4 0EY, UK
Telephone: +44 (0) 1223 755950 - Fax: +44 (0) 1223 755951 - E-Mail: info@abbexa.com

Conjugation: Unconjugated

Storage: Aliquot and store at -20 °C. Avoid repeated freeze/thaw cycles.

Swiss Prot: [P46531](#)

Buffer: PBS (without Mg^{2+} and Ca^{2+}), pH 7.4, 150 mM NaCl, 0.02% sodium azide, 50% glycerol.

Note: This product is for research use only.