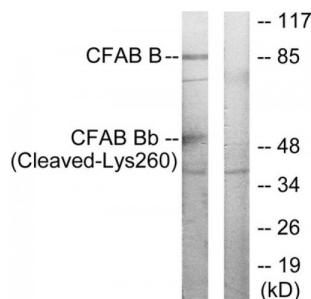


Abbexa Ltd, Innovation Centre, Cambridge Science Park, Cambridge, CB4 0EY, UK  
Telephone: +44 (0) 1223 755950 - Fax: +44 (0) 1223 755951 - E-Mail: [info@abbexa.com](mailto:info@abbexa.com)

## Complement Factor B (CFB) Antibody

Catalogue No.: abx015584



Western blot analysis of extracts from K562 cells, treated with etoposide (25uM, 1hour), using CFAB Bb (Cleaved-Lys260) antibody.

Rabbit polyclonal antibody against CFAB Bb protein. Immunogen region is Internal. Specificity is as follows for the reactive species: H:K260, M:K257.

|                                  |  |
|----------------------------------|--|
| <b>Target:</b>                   | CFAB Bb  |
| <b>Reactivity:</b>               | Human, Mouse   |
| <b>Host:</b>                     | Rabbit   |
| <b>Clonality:</b>                | Polyclonal   |
| <b>Tested Applications:</b>      | ELISA, WB  |
| <b>Recommended dilutions:</b>    | WB: 1/500 - 1/3000, ELISA: 1/20000. Optimal dilutions/concentrations should be determined by the end user. |
| <b>Immunogen:</b>                | The antiserum was produced against synthesized peptide derived from internal of human CFAB Bb.             |
| <b>Purification:</b>             | Purified from rabbit antiserum by affinity chromatography using epitope-specific immunogen.                |
| <b>Form:</b>                     | Liquid   |
| <b>Isotype:</b>                  | IgG  |
| <b>Conjugation:</b>              | Unconjugated   |
| <b>Storage:</b>                  | Aliquot and store at -20 °C. Avoid repeated freeze/thaw cycles.  |
| <b>Swiss Prot:</b>               | <a href="#">P00751</a>   |
| <b>Enzyme Commission Number:</b> | EC 3.4.21.47   |

Abbexa Ltd, Innovation Centre, Cambridge Science Park, Cambridge, CB4 0EY, UK  
Telephone: +44 (0) 1223 755950 - Fax: +44 (0) 1223 755951 - E-Mail: [info@abbexa.com](mailto:info@abbexa.com)

**Buffer:** PBS (without  $Mg^{2+}$  and  $Ca^{2+}$ ), pH 7.4, 150 mM NaCl, 0.02% sodium azide, 50% glycerol.

**Note:** This product is for research use only.