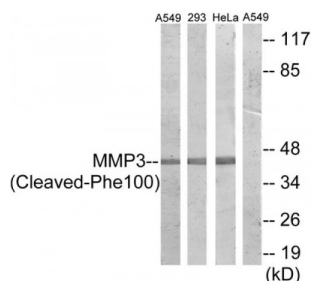


Abbexa Ltd, Innovation Centre, Cambridge Science Park, Cambridge, CB4 0EY, UK
Telephone: +44 (0) 1223 755950 - Fax: +44 (0) 1223 755951 - E-Mail: info@abbexa.com

MMP3 (Cleaved-Phe100) Antibody

Catalogue No.: abx015609



Western blot analysis of extracts from A549 cells and HeLa cells treated with etoposide (25uM, 24hours), 293 cells treated with etoposide (25uM, 1hour), using MMP3 (Cleaved-Phe100) antibody.

Rabbit polyclonal antibody against MMP3 protein. Immunogen region is Internal. Specificity is as follows for the reactive species: H:F100.

Target:	Matrix Metalloproteinase 3 (MMP3)
Reactivity:	Human
Host:	Rabbit
Clonality:	Polyclonal
Tested Applications:	ELISA, WB
Recommended dilutions:	WB: 1/500 - 1/3000, ELISA: 1/20000. Optimal dilutions/concentrations should be determined by the end user.
Immunogen:	The antiserum was produced against synthesized peptide derived from internal of human MMP3.
Purification:	Purified from rabbit antiserum by affinity chromatography using epitope-specific immunogen.
Form:	Liquid
Isotype:	IgG
Conjugation:	Unconjugated
Storage:	Aliquot and store at -20 °C. Avoid repeated freeze/thaw cycles.
Swiss Prot:	P08254
Enzyme Commission Number:	EC 3.4.24.17::EC 3.4.24

Abbexa Ltd, Innovation Centre, Cambridge Science Park, Cambridge, CB4 0EY, UK
Telephone: +44 (0) 1223 755950 - Fax: +44 (0) 1223 755951 - E-Mail: info@abbexa.com

Buffer: PBS (without Mg^{2+} and Ca^{2+}), pH 7.4, 150 mM NaCl, 0.02% sodium azide, 50% glycerol.

Note: This product is for research use only.