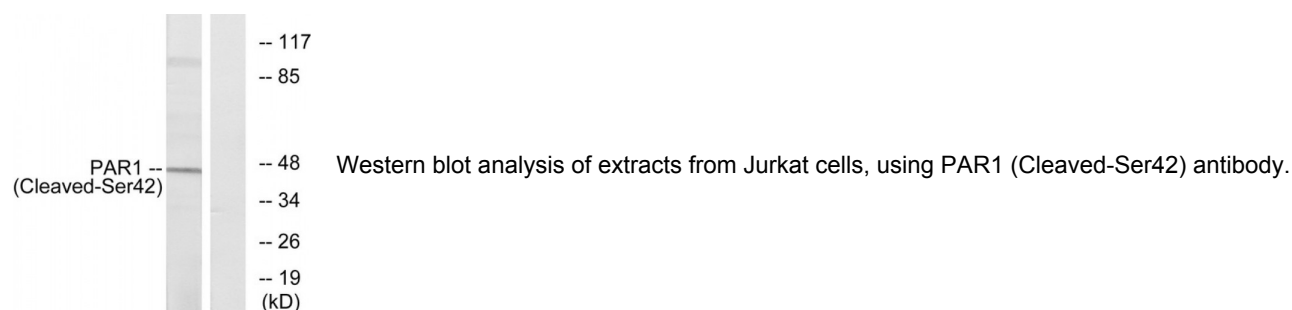


Abbexa Ltd, Innovation Centre, Cambridge Science Park, Cambridge, CB4 0EY, UK  
Telephone: +44 (0) 1223 755950 - Fax: +44 (0) 1223 755951 - E-Mail: [info@abbexa.com](mailto:info@abbexa.com)

## PAR1 (Cleaved-Ser42) Antibody

Catalogue No.: abx015616



Rabbit polyclonal antibody against PAR1 protein. Immunogen region is N-terminal. Specificity is as follows for the reactive species: H:S42.

**Target:** PAR1

**Reactivity:** Human

**Host:** Rabbit

**Clonality:** Polyclonal

**Tested Applications:** ELISA, WB

**Recommended dilutions:** WB: 1/500 - 1/3000, ELISA: 1/20000. Optimal dilutions/concentrations should be determined by the end user.

**Immunogen:** The antiserum was produced against synthesized peptide derived from N-terminal of human PAR1.

**Purification:** Purified from rabbit antiserum by affinity chromatography using epitope-specific immunogen.

**Form:** Liquid

**Isotype:** IgG

**Conjugation:** Unconjugated

**Storage:** Aliquot and store at -20 °C. Avoid repeated freeze/thaw cycles.

**Swiss Prot:** [P25116](#)

**Buffer:** PBS (without  $Mg^{2+}$  and  $Ca^{2+}$ ), pH 7.4, 150 mM NaCl, 0.02% sodium azide, 50% glycerol.

**Note:** This product is for research use only.