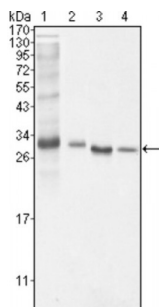


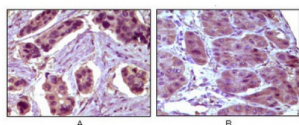
Abbexa Ltd, Innovation Centre, Cambridge Science Park, Cambridge, CB4 0EY, UK
Telephone: +44 (0) 1223 755950 - Fax: +44 (0) 1223 755951 - E-Mail: info@abbexa.com

B-Cell Lymphoma/leukemia 10 (BCL10) Antibody

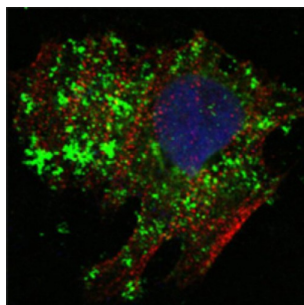
Catalogue No.: abx015774



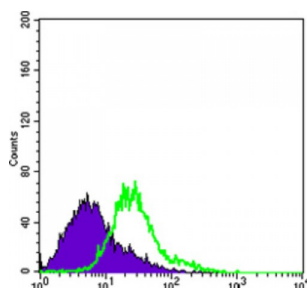
Western blot analysis using BCL10 antibody against NIH/3T3 (1), HeLa (2), MCF-7 (3) and Jurkat (4) cell lysate.



Immunohistochemical analysis of paraffin-embedded human breast carcinoma (A) and liver carcinoma (B), showing cytoplasmic localization using BCL10 antibody with DAB staining.



Confocal immunofluorescence analysis of HeLa cells using BCL10 antibody (green). Red: Actin filaments have been labeled with Alexa Fluor-555 phalloidin. Blue: DRAQ5 fluorescent DNA dye.



Flow cytometric analysis of HeLa cells using BCL10 antibody (green) and negative control (purple).

Bcl-10 (B-cell CLL/lymphoma 10), also known as CLAP, Me10, CIPER, c-E10, CARMEN. Entrez Protein NP_003912. It is a protein containing a caspase recruitment domain (CARD). It plays an important role in apoptosis and activating NF-kappaB. The research suggested that it interacted with other CARD domain containing proteins including CARD9, 10, 11 and 14, which were thought to function as upstream regulators in NF-kappaB signaling. Bcl-10 is found to form a complex with MALT1 which encoded by another gene known to be translocated in MALT lymphoma. MALT1 and Bcl-10 are thought to synergize in the activation of NF-kappaB, and the deregulation of either of them may contribute to the same pathogenetic process that leads to the malignancy.

Abbexa Ltd, Innovation Centre, Cambridge Science Park, Cambridge, CB4 0EY, UK
Telephone: +44 (0) 1223 755950 - Fax: +44 (0) 1223 755951 - E-Mail: info@abbexa.com

Target:	BCL10
Reactivity:	Human, Mouse
Host:	Mouse
Clonality:	Monoclonal
Tested Applications:	ELISA, WB, IHC, IF/ICC, FCM
Recommended dilutions:	ELISA: 1/10000, WB: 1/500 - 1/2000, IHC: 1/200 - 1/1000, IF/ICC: 1/200 - 1/1000, FCM: 1/200 - 1/400. Optimal dilutions/concentrations should be determined by the end user.
Immunogen:	Purified recombinant fragment of human BCL-10 expressed in E. coli.
Purification:	Purified antibody
Isotype:	IgG ₁
Conjugation:	Unconjugated
Storage:	Aliquot and store at -20 °C. Avoid repeated freeze/thaw cycles.
Molecular Weight:	26 kDa
GeneID:	8915
Concentration:	1.0 mg/ml
Buffer:	PBS containing 0.03% sodium azide.
Note:	This product is for research use only.