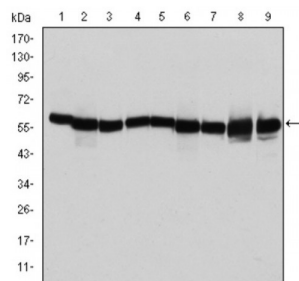


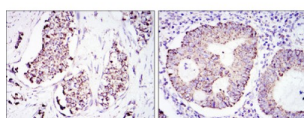
Abbexa Ltd, Innovation Centre, Cambridge Science Park, Cambridge, CB4 0EY, UK
Telephone: +44 (0) 1223 755950 - Fax: +44 (0) 1223 755951 - E-Mail: info@abbexa.com

Heat Shock Protein 60 (HSPD1/HSP60/GROEL) Antibody

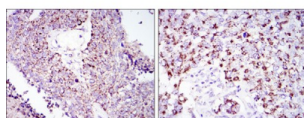
Catalogue No.: abx015886



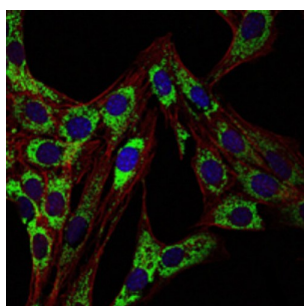
Western blot analysis using HSP60 antibody against T47D (1), HeLa (2), HepG2 (3), A549 (4), Jurkat (5), HEK293 (6), NIH/3T3 (7), PC-12 (8) and Cos7 (9) cell lysate.



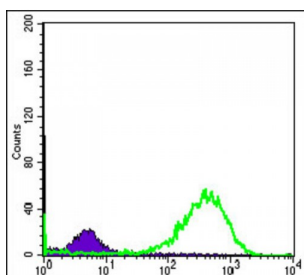
Immunohistochemical analysis of paraffin-embedded lung cancer tissues (left) and kidney cancer tissues (right) using HSP60 antibody with DAB staining.



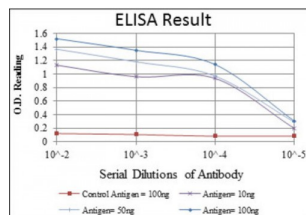
Immunohistochemical analysis of paraffin-embedded breast cancer tissues (left) and colon cancer tissues (right) using HSP60 antibody with DAB staining.



Immunofluorescence analysis of 3T3-L1 cells using HSP60 antibody (green). Blue: DRAQ5 fluorescent DNA dye. Red: Actin filaments have been labeled with Alexa Fluor-555 phalloidin.



Flow cytometric analysis of HeLa cells using HSP60 antibody (green) and negative control (purple).



Red: Control Antigen (100ng) ; Purple: Antigen (10ng) ; Green: Antigen (50ng) ; Blue: Antigen (100ng).

This gene encodes a member of the chaperonin family. The encoded mitochondrial protein may function as a signaling molecule in the innate immune system. This protein is essential for the folding and assembly of newly imported proteins in the mitochondria. This gene is adjacent to a related family member and the region between the 2 genes functions as a bidirectional promoter. Several pseudogenes have been associated with this gene. Two transcript variants encoding the same protein have been identified for this gene. Mutations associated with this gene cause autosomal recessive spastic paraplegia 13. (provided by RefSeq).

Target: Heat Shock Protein 60 (HSPD1/HSP60/GROEL)

Reactivity: Human, Rat, Mouse, Monkey

Host: Mouse

Clonality: Monoclonal

Tested Applications: ELISA, WB, IHC, IF/ICC, FCM

Recommended dilutions: ELISA: 1/10000, WB: 1/500 - 1/2000, IHC: 1/200 - 1/1000, IF/ICC: 1/200 - 1/1000, FCM: 1/200 - 1/400. Optimal dilutions/concentrations should be determined by the end user.

Immunogen: Purified recombinant fragment of human HSP60 expressed in E. coli.

Purification: Unpurified Ascites.

Isotype: IgG₁

Conjugation: Unconjugated

Storage: Aliquot and store at -20 °C. Avoid repeated freeze/thaw cycles.

Molecular Weight: 61 kDa

GeneID: [3329](#)

Buffer: Ascitic fluid containing 0.03% sodium azide.

Note: This product is for research use only.