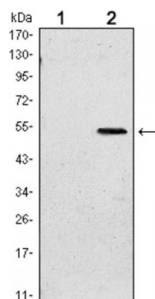


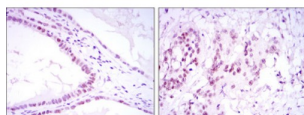
Abbexa Ltd, Innovation Centre, Cambridge Science Park, Cambridge, CB4 0EY, UK  
Telephone: +44 (0) 1223 755950 - Fax: +44 (0) 1223 755951 - E-Mail: info@abbexa.com

## Polycomb Protein SUZ12 (SUZ12) Antibody

Catalogue No.: abx016005



Western blot analysis using SUZ12 antibody against HEK293 (1) and SUZ12 (AA: 533-739) - hIgGFc transfected HEK293 (2) cell lysate.



Immunohistochemical analysis of paraffin-embedded kidney convoluted tubule tissues (left) and esophageal cancer tissues (right) using SUZ12 antibody with DAB staining.

This zinc finger gene has been identified at the breakpoints of a recurrent chromosomal translocation reported in endometrial stromal sarcoma. Recombination of these breakpoints results in the fusion of this gene and JAZF1. The protein encoded by this gene contains a zinc finger domain in the C terminus of the coding region. (Provided by RefSeq) SUZ12 is overexpressed in several human tumors, including tumors of the colon, breast and liver. Tissue specificity: Overexpressed in breast and colon cancer.

**Target:** SUZ12

**Reactivity:** Human

**Host:** Mouse

**Clonality:** Monoclonal

**Tested Applications:** ELISA, WB, IHC

**Recommended dilutions:** ELISA: 1/10000, WB: 1/500 - 1/2000, IHC: 1/200 - 1/1000. Optimal dilutions/concentrations should be determined by the end user.

**Immunogen:** Purified recombinant fragment of human SUZ12 expressed in E. coli.

**Purification:** Unpurified Ascites.

**Isotype:** IgG<sub>1</sub>

Abbexa Ltd, Innovation Centre, Cambridge Science Park, Cambridge, CB4 0EY, UK  
Telephone: +44 (0) 1223 755950 - Fax: +44 (0) 1223 755951 - E-Mail: [info@abbexa.com](mailto:info@abbexa.com)

|                          |                                                                 |
|--------------------------|-----------------------------------------------------------------|
| <b>Conjugation:</b>      | Unconjugated                                                    |
| <b>Storage:</b>          | Aliquot and store at -20 °C. Avoid repeated freeze/thaw cycles. |
| <b>Molecular Weight:</b> | 83.1 kDa                                                        |
| <b>Swiss Prot:</b>       | <a href="#">Q15022</a>                                          |
| <b>GeneID:</b>           | <a href="#">23512</a>                                           |
| <b>Gene Symbol:</b>      | SUZ12                                                           |
| <b>OMIM:</b>             | <a href="#">606245</a>                                          |
| <b>HGNC:</b>             | 17101                                                           |
| <b>Ensembl:</b>          | ENSG00000178691                                                 |
| <b>Buffer:</b>           | Ascitic fluid containing 0.03% sodium azide.                    |
| <b>Note:</b>             | This product is for research use only.                          |