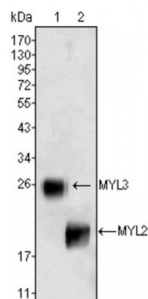


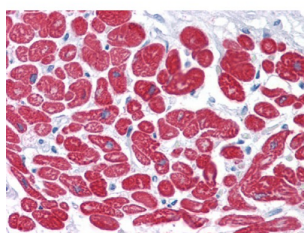
Abbexa Ltd, Innovation Centre, Cambridge Science Park, Cambridge, CB4 0EY, UK  
Telephone: +44 (0) 1223 755950 - Fax: +44 (0) 1223 755951 - E-Mail: [info@abbexa.com](mailto:info@abbexa.com)

## Myosin Light Chain 3 (MYL3) Antibody

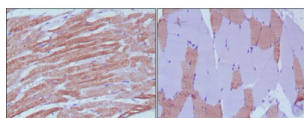
Catalogue No.: abx016041



Western blot analysis using MYL3 (1) and MYL2 (2) antibody against rat fetal heart tissues lysate.



Immunohistochemical analysis of paraffin-embedded human skeletal muscle (left) and cardiac muscle (right) using MYL3 antibody with DAB staining.



Immunohistochemical analysis of paraffin-embedded human Heart tissues using MYL3 antibody.

Myosins are a large superfamily of motor proteins that move along actin filaments, while hydrolyzing ATP. Myosin is the major component of thick muscle filaments, and is a long asymmetric molecule containing a globular head and a long tail. The molecule consists of two heavy chains and four light chains. Activation of smooth and cardiac muscle primarily involves pathways which increase calcium and myosin phosphorylation resulting in contraction. Myosin light chain phosphatase acts to regulate muscle contraction by dephosphorylating activated myosin light chain. MYL3 encodes myosin light chain 3, an alkali light chain also referred to in the literature as both the ventricular isoform and the slow skeletal muscle isoform. Human myosin light chain has clinical application as a cardiac marker. Mutations in MYL3 have been identified as a cause of mid-left ventricular chamber type hypertrophic cardiomyopathy.

**Target:** MYL3

**Reactivity:** Human

**Host:** Mouse

**Clonality:** Monoclonal

Abbexa Ltd, Innovation Centre, Cambridge Science Park, Cambridge, CB4 0EY, UK  
Telephone: +44 (0) 1223 755950 - Fax: +44 (0) 1223 755951 - E-Mail: [info@abbexa.com](mailto:info@abbexa.com)

**Tested Applications:** ELISA, WB, IHC

**Recommended dilutions:** ELISA: 1/10000, WB: 1/500 - 1/2000, IHC: 1/200 - 1/1000. Optimal dilutions/concentrations should be determined by the end user.

**Immunogen:** Purified recombinant fragment of MYL3 expressed in E. coli.

**Purification:** Unpurified Ascites.

**Isotype:** IgG<sub>1</sub>

**Conjugation:** Unconjugated

**Storage:** Aliquot and store at -20 °C. Avoid repeated freeze/thaw cycles.

**Molecular Weight:** 22 kDa

**Swiss Prot:** [P08590](#)

**GeneID:** [4634](#)

**Gene Symbol:** MYL3

**OMIM:** [160790](#)

**HGNC:** 7584

**Ensembl:** ENSG00000160808

**Buffer:** Ascitic fluid containing 0.03% sodium azide.

**Note:** This product is for research use only.