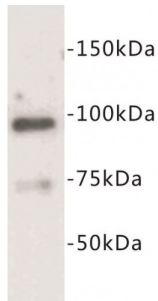


Abbexa Ltd, Innovation Centre, Cambridge Science Park, Cambridge, CB4 0EY, UK
Telephone: +44 (0) 1223 755950 - Fax: +44 (0) 1223 755951 - E-Mail: info@abbexa.com

Junctophilin-2 (Jph2) Antibody

Catalogue No.: abx019119



Junctophilin-2 Antibody is a Rabbit Polyclonal antibody against Human, Mouse and Rat.

Target: Junctophilin-2

Reactivity: Human, Mouse, Rat

Host: Rabbit

Clonality: Polyclonal

Tested Applications: WB, IF/ICC

Recommended dilutions: Optimal dilutions/concentrations should be determined by the end user.

Immunogen: A synthetic peptide (conjugated with KLH) corresponding to region of mouse Junctophilin-2.

Purification: Immunogen affinity purified.

Isotype: IgG

Conjugation: Unconjugated

Storage: Aliquot and store at -20 °C. Avoid repeated freeze/thaw cycles.

Swiss Prot: [Q9BR39](#)

GeneID: [57158](#)

OMIM: [605267](#)

Buffer: TBS, pH 7.4, 0.5% BSA, 40% glycerol and 0.05% sodium azide.

Abbexa Ltd, Innovation Centre, Cambridge Science Park, Cambridge, CB4 0EY, UK
Telephone: +44 (0) 1223 755950 - Fax: +44 (0) 1223 755951 - E-Mail: info@abbexa.com

Note: This product is for research use only.