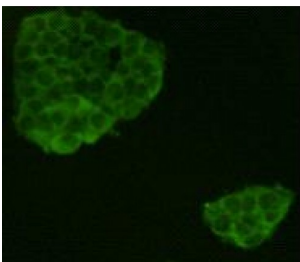
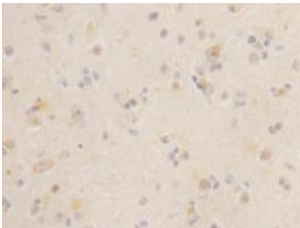
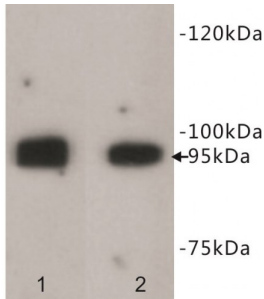


Abbexa Ltd, Innovation Centre, Cambridge Science Park, Cambridge, CB4 0EY, UK  
Telephone: +44 (0) 1223 755950 - Fax: +44 (0) 1223 755951 - E-Mail: info@abbexa.com

## Leucine Rich Repeat Containing G Protein-Coupled Receptor 5 (LGR5) Antibody

Catalogue No.: abx019126



LGR5 Antibody is a Rabbit Polyclonal antibody against Human and Mouse.

<b>Target:</b>	LGR5
<b>Reactivity:</b>	Human, Mouse
<b>Host:</b>	Rabbit
<b>Clonality:</b>	Polyclonal
<b>Tested Applications:</b>	WB, IF/ICC
<b>Recommended dilutions:</b>	Optimal dilutions/concentrations should be determined by the end user.
<b>Immunogen:</b>	A synthetic peptide (conjugated to KLH) corresponding to the region of LGR5.

Abbexa Ltd, Innovation Centre, Cambridge Science Park, Cambridge, CB4 0EY, UK  
Telephone: +44 (0) 1223 755950 - Fax: +44 (0) 1223 755951 - E-Mail: [info@abbexa.com](mailto:info@abbexa.com)

<b>Purification:</b>	Immunogen affinity purified.
<b>Isotype:</b>	IgG
<b>Conjugation:</b>	Unconjugated
<b>Storage:</b>	Aliquot and store at -20 °C. Avoid repeated freeze/thaw cycles.
<b>Swiss Prot:</b>	<a href="#">O75473</a>
<b>GeneID:</b>	<a href="#">8549</a>
<b>OMIM:</b>	<a href="#">606667</a>
<b>Buffer:</b>	TBS, pH 7.4, 0.5% BSA, 40% glycerol and 0.05% sodium azide.
<b>Note:</b>	This product is for research use only.