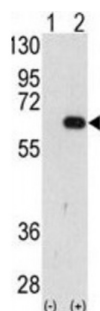
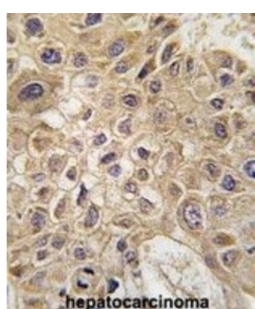
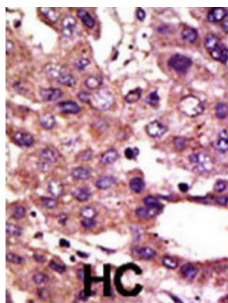


Abbexa Ltd, Innovation Centre, Cambridge Science Park, Cambridge, CB4 0EY, UK
Telephone: +44 (0) 1223 755950 - Fax: +44 (0) 1223 755951 - E-Mail: info@abbexa.com

Autocrine Motility Factor Receptor (AMFR) Antibody

Catalogue No.: abx025052



Autocrine motility factor (AMF) is a protein secreted by tumor cells that stimulates tumor motility. The gene for AMFR encodes a 323-amino acid polypeptide that has a single transmembrane domain and several putative glycosylation sites. The protein sequence has some homology to human tumor protein p53.

| | |
|-----------------------------|--------------|
| Target: | AMFR |
| Reactivity: | Human |
| Host: | Rabbit |
| Clonality: | Polyclonal |
| Tested Applications: | WB, IHC, FCM |

Recommended dilutions: Optimal dilutions/concentrations should be determined by the end user.

Abbexa Ltd, Innovation Centre, Cambridge Science Park, Cambridge, CB4 0EY, UK
Telephone: +44 (0) 1223 755950 - Fax: +44 (0) 1223 755951 - E-Mail: info@abbexa.com

| | |
|------------------------|---|
| Immunogen: | Human AMFR. |
| Purification: | Purified Rabbit Polyclonal Antibody. |
| Isotype: | IgG |
| Conjugation: | Unconjugated |
| Specificity: | This AMFR antibody is generated from rabbits immunized with a KLH conjugated synthetic peptide between 571-601 amino acids from the N-terminal region of human AMFR. |
| Storage: | Aliquot and store at -20 °C. Avoid repeated freeze/thaw cycles. |
| Swiss Prot: | Q9UKV5 |
| NCBI Accession: | NP_001135.3 |
| Buffer: | PBS with 0.09% (W/V) sodium azide. This antibody is purified through a protein G column, eluted with high and low pH buffers and neutralized immediately, followed by dialysis against PBS. |
| Note: | This product is for research use only. |