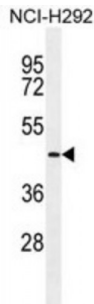


## Transmembrane Protease Serine 11E (TMPRSS11E2) Antibody

Catalogue No.: abx025081



TMPRSS11E is a serine protease which possesses both gelatinolytic and caseinolytic activities. Shows a preference for Arg in the P1 position (By similarity).

**Target:** TMPRSS11E2

**Reactivity:** Human

**Host:** Rabbit

**Clonality:** Polyclonal

**Tested Applications:** WB

**Recommended dilutions:** Optimal dilutions/concentrations should be determined by the end user.

**Immunogen:** Human TMPRSS11E2.

**Purification:** Peptide Affinity Purified Rabbit Polyclonal Antibody.

**Isotype:** IgG

**Conjugation:** Unconjugated

**Specificity:** This TMPRSS11E2 antibody is generated from rabbits immunized with a KLH conjugated synthetic peptide between 249-277 amino acids from the Central region of human TMPRSS11E2.

**Storage:** Aliquot and store at -20 °C. Avoid repeated freeze/thaw cycles.

**Swiss Prot:** [Q9UL52](#)

**Gene Symbol:** TMPRSS11E2

Abbexa Ltd, Innovation Centre, Cambridge Science Park, Cambridge, CB4 0EY, UK  
Telephone: +44 (0) 1223 755950 - Fax: +44 (0) 1223 755951 - E-Mail: [info@abbexa.com](mailto:info@abbexa.com)

**Buffer:** PBS with 0.09% (W/V) sodium azide. This antibody is purified through a protein A column, followed by peptide affinity purification.

**Note:** This product is for research use only.