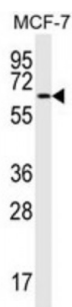
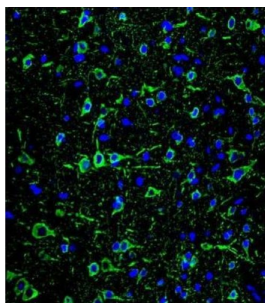


Abbexa Ltd, Innovation Centre, Cambridge Science Park, Cambridge, CB4 0EY, UK  
Telephone: +44 (0) 1223 755950 - Fax: +44 (0) 1223 755951 - E-Mail: [info@abbexa.com](mailto:info@abbexa.com)

## **Microtubule Associated Protein 2 (MAP2) Antibody**

Catalogue No.: abx025211



The exact function of MAP2 is unknown but MAPs may stabilize the microtubules against depolymerization. They also seem to have a stiffening effect on microtubules. This antibody is supplied as crude ascites.

**Target:** MAP2

**Reactivity:** Human

**Host:** Mouse

**Clonality:** Monoclonal

**Tested Applications:** WB, IHC, IF/ICC

**Recommended dilutions:** Optimal dilutions/concentrations should be determined by the end user.

**Immunogen:** Human MAP2.

Abbexa Ltd, Innovation Centre, Cambridge Science Park, Cambridge, CB4 0EY, UK  
Telephone: +44 (0) 1223 755950 - Fax: +44 (0) 1223 755951 - E-Mail: [info@abbexa.com](mailto:info@abbexa.com)

<b>Purification:</b>	Mouse Monoclonal Antibody (Mab) supplied as crude ascites.
<b>Isotype:</b>	IgG <sub>1</sub> κ
<b>Conjugation:</b>	Unconjugated
<b>Specificity:</b>	This MAP2 Monoclonal antibody was raised using purified His-tagged recombinant human MAP2.
<b>Storage:</b>	Aliquot and store at -20 °C. Avoid repeated freeze/thaw cycles.
<b>Swiss Prot:</b>	<a href="#">P11137</a>
<b>Buffer:</b>	Mouse monoclonal antibody supplied in crude ascites with 0.09% (W/V) sodium azide.
<b>Note:</b>	This product is for research use only.