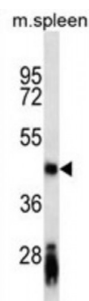


Abbexa Ltd, Innovation Centre, Cambridge Science Park, Cambridge, CB4 0EY, UK  
Telephone: +44 (0) 1223 755950 - Fax: +44 (0) 1223 755951 - E-Mail: [info@abbexa.com](mailto:info@abbexa.com)

## B-Cell Antigen Receptor Complex-Associated Protein Alpha Chain (CD79A) Antibody

Catalogue No.: abx025316



The B lymphocyte antigen receptor is a multimeric complex that includes the antigen-specific component, surface immunoglobulin (Ig). Surface Ig non-covalently associates with two other proteins, Ig-alpha and Ig-beta, which are necessary for expression and function of the B-cell antigen receptor. This gene encodes the Ig-alpha protein of the B-cell antigen component. Alternatively spliced transcript variants encoding different isoforms have been described. This antibody is supplied as crude ascites.

**Target:** CD79A

**Reactivity:** Mouse

**Host:** Mouse

**Clonality:** Monoclonal

**Tested Applications:** WB

**Recommended dilutions:** Optimal dilutions/concentrations should be determined by the end user.

**Immunogen:** Human CD79A.

**Purification:** Mouse Monoclonal Antibody (Mab) supplied as crude ascites.

**Isotype:** IgG<sub>1</sub>

**Conjugation:** Unconjugated

**Specificity:** This CD79A antibody is generated from mice immunized with a KLH conjugated synthetic peptide between 160-188 amino acids from the C-terminal region of human CD79A.

**Storage:** Aliquot and store at -20 °C. Avoid repeated freeze/thaw cycles.

**Swiss Prot:** [P11912](#)

Abbexa Ltd, Innovation Centre, Cambridge Science Park, Cambridge, CB4 0EY, UK  
Telephone: +44 (0) 1223 755950 - Fax: +44 (0) 1223 755951 - E-Mail: [info@abbexa.com](mailto:info@abbexa.com)

**Buffer:** Mouse monoclonal antibody supplied in crude ascites with 0.09% (W/V) sodium azide.

**Note:** This product is for research use only.