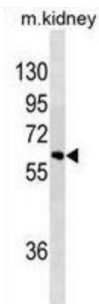


Sprouty-Related, EVH1 Domain-Containing Protein 1 (SPRED1) Antibody

Catalogue No.: abx025404



The protein encoded by this gene is a member of the Sprouty family of proteins and is phosphorylated by tyrosine kinase in response to several growth factors. The encoded protein can act as a homodimer or as a heterodimer with SPRED2 to regulate activation of the MAP kinase cascade. Defects in this gene are a cause of neurofibromatosis type 1-like syndrome (NFLS). [provided by RefSeq].

Target: SPRED1

Reactivity: Human, Mouse

Host: Mouse

Clonality: Monoclonal

Tested Applications: WB

Recommended dilutions: Optimal dilutions/concentrations should be determined by the end user.

Immunogen: Human SPRED1.

Purification: Purified Mouse Monoclonal Antibody.

Isotype: IgG₁

Conjugation: Unconjugated

Specificity: Purified His-tagged SPRED1 protein (Fragment) was used to produced this monoclonal antibody.

Storage: Aliquot and store at -20 °C. Avoid repeated freeze/thaw cycles.

Swiss Prot: [Q7Z699](#)

Abbexa Ltd, Innovation Centre, Cambridge Science Park, Cambridge, CB4 0EY, UK
Telephone: +44 (0) 1223 755950 - Fax: +44 (0) 1223 755951 - E-Mail: info@abbexa.com

Buffer: PBS with 0.09% (W/V) sodium azide. This antibody is purified through a protein G column, eluted with high and low pH buffers and neutralized immediately, followed by dialysis against PBS.

Note: This product is for research use only.