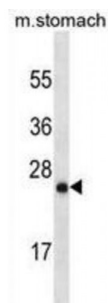


Abbexa Ltd, Innovation Centre, Cambridge Science Park, Cambridge, CB4 0EY, UK  
Telephone: +44 (0) 1223 755950 - Fax: +44 (0) 1223 755951 - E-Mail: [info@abbexa.com](mailto:info@abbexa.com)

## Ly6/PLAUR Domain-Containing Protein 6B (LYPD6B) Antibody

Catalogue No.: abx025521



The function of this protein is unknown. This antibody is supplied as crude ascites.

**Target:** LYPD6B

**Reactivity:** Human, Mouse

**Host:** Mouse

**Clonality:** Monoclonal

**Tested Applications:** WB

**Recommended dilutions:** Optimal dilutions/concentrations should be determined by the end user.

**Immunogen:** Human LYPD6B.

**Purification:** Mouse Monoclonal Antibody (Mab) supplied as crude ascites.

**Isotype:** IgG<sub>2b</sub>

**Conjugation:** Unconjugated

**Specificity:** This LYPD6B antibody is generated from mice immunized with a KLH conjugated synthetic peptide between 79-108 amino acids from the Central region of human LYPD6B.

**Storage:** Aliquot and store at -20 °C. Avoid repeated freeze/thaw cycles.

**Swiss Prot:** [Q8NI32](#)

**Buffer:** Mouse monoclonal antibody supplied in crude ascites with 0.09% (W/V) sodium azide.

**Note:** This product is for research use only.