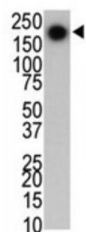


Abbexa Ltd, Innovation Centre, Cambridge Science Park, Cambridge, CB4 0EY, UK
Telephone: +44 (0) 1223 755950 - Fax: +44 (0) 1223 755951 - E-Mail: info@abbexa.com

Leucine-Rich Repeat Serine/threonine-Protein Kinase 2 (PARK8) Antibody

Catalogue No.: abx025542



This gene is a member of the leucine-rich repeat kinase family and encodes a protein with an ankryin repeat region, a leucine-rich repeat (LRR) domain, a kinase domain, a DFG-like motif, a RAS domain, a GTPase domain, a MLK-like domain, and a WD40 domain. The protein is present largely in the cytoplasm but also associates with the mitochondrial outer membrane. Mutations in this gene have been associated with Parkinson disease-8.

Target: PARK8 (LRRK2)

Reactivity: Human, Mouse

Host: Mouse

Clonality: Monoclonal

Tested Applications: WB

Recommended dilutions: Optimal dilutions/concentrations should be determined by the end user.

Immunogen: Human PARK8 (LRRK2).

Purification: Purified Mouse Monoclonal Antibody.

Isotype: IgG₁

Conjugation: Unconjugated

Specificity: This PARK8 (LRRK2) antibody was raised in mice using purified His-tagged recombinant protein comprised of the C-terminal 261 residues of LRRK2.

Storage: Aliquot and store at -20 °C. Avoid repeated freeze/thaw cycles.

Swiss Prot: [Q5S007](#)

Abbexa Ltd, Innovation Centre, Cambridge Science Park, Cambridge, CB4 0EY, UK
Telephone: +44 (0) 1223 755950 - Fax: +44 (0) 1223 755951 - E-Mail: info@abbexa.com

NCBI Accession: NP_940980.3

Buffer: PBS with 0.09% (W/V) sodium azide. This antibody is purified through a protein G column, eluted with high and low pH buffers and neutralized immediately, followed by dialysis against PBS.

Note: This product is for research use only.