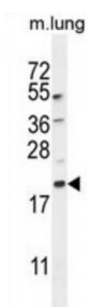
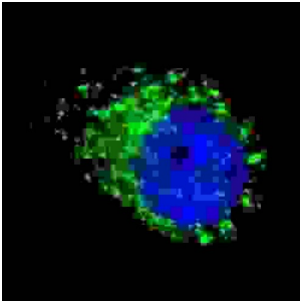


Abbexa Ltd, Innovation Centre, Cambridge Science Park, Cambridge, CB4 0EY, UK
Telephone: +44 (0) 1223 755950 - Fax: +44 (0) 1223 755951 - E-Mail: info@abbexa.com

Microtubule-Associated Proteins 1A/1B Light Chain 3B (MAP1LC3A/B) Antibody

Catalogue No.: abx025820



The product of this gene is a subunit of neuronal microtubule-associated MAP1A and MAP1B proteins, which are involved in microtubule assembly and important for neurogenesis. Studies on the rat homolog implicate a role for this gene in autophagy, a process that involves the bulk degradation of cytoplasmic component.

Target: APG8a/b (MAP1LC3A/B)

Reactivity: Human, Mouse

Host: Rabbit

Clonality: Polyclonal

Tested Applications: WB, IHC, IF/ICC

Recommended dilutions: Optimal dilutions/concentrations should be determined by the end user.

Abbexa Ltd, Innovation Centre, Cambridge Science Park, Cambridge, CB4 0EY, UK
Telephone: +44 (0) 1223 755950 - Fax: +44 (0) 1223 755951 - E-Mail: info@abbexa.com

Immunogen:	Human APG8a/b (MAP1LC3A/B).
Purification:	Peptide Affinity Purified Rabbit Polyclonal Antibody.
Isotype:	IgG
Conjugation:	Unconjugated
Specificity:	This Cleaved-APG8a/b antibody is generated from rabbits immunized with a KLH conjugated synthetic peptide between 100-125 amino acids from human Cleaved-APG8a/b.
Storage:	Aliquot and store at -20 °C. Avoid repeated freeze/thaw cycles.
Swiss Prot:	Q9GZQ8
Buffer:	PBS with 0.09% (W/V) sodium azide. This antibody is purified through a protein A column, followed by peptide affinity purification.
Note:	This product is for research use only.