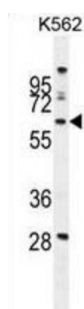
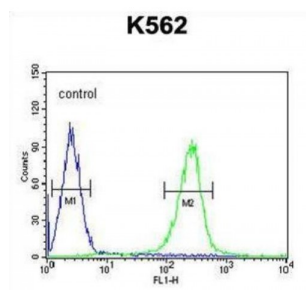


Abbexa Ltd, Innovation Centre, Cambridge Science Park, Cambridge, CB4 0EY, UK  
Telephone: +44 (0) 1223 755950 - Fax: +44 (0) 1223 755951 - E-Mail: [info@abbexa.com](mailto:info@abbexa.com)

## WD Repeat-Containing Protein 49 (WDR49) Antibody

Catalogue No.: abx025962



WDR49 contains 8 WD repeats. The exact function of WDR49 remains unknown. There are two named isoforms.

**Target:** WDR49

**Reactivity:** Human

**Host:** Rabbit

**Clonality:** Polyclonal

**Tested Applications:** WB, IHC, FCM

**Recommended dilutions:** Optimal dilutions/concentrations should be determined by the end user.

**Immunogen:** Human WDR49.

Abbexa Ltd, Innovation Centre, Cambridge Science Park, Cambridge, CB4 0EY, UK  
Telephone: +44 (0) 1223 755950 - Fax: +44 (0) 1223 755951 - E-Mail: [info@abbexa.com](mailto:info@abbexa.com)

|                      |                                                                                                                                                                        |
|----------------------|------------------------------------------------------------------------------------------------------------------------------------------------------------------------|
| <b>Purification:</b> | Peptide Affinity Purified Rabbit Polyclonal Antibody.                                                                                                                  |
| <b>Isotype:</b>      | IgG                                                                                                                                                                    |
| <b>Conjugation:</b>  | Unconjugated                                                                                                                                                           |
| <b>Specificity:</b>  | This WDR49 antibody is generated from rabbits immunized with a KLH conjugated synthetic peptide between 550-579 amino acids from the C-terminal region of human WDR49. |
| <b>Storage:</b>      | Aliquot and store at -20 °C. Avoid repeated freeze/thaw cycles.                                                                                                        |
| <b>Swiss Prot:</b>   | <a href="#"><u>Q8IV35</u></a>                                                                                                                                          |
| <b>Gene Symbol:</b>  | WDR49                                                                                                                                                                  |
| <b>Buffer:</b>       | PBS with 0.09% (W/V) sodium azide. This antibody is purified through a protein A column, followed by peptide affinity purification.                                    |
| <b>Note:</b>         | This product is for research use only.                                                                                                                                 |