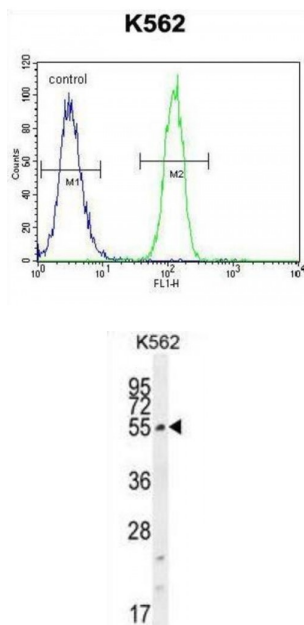


Abbexa Ltd, Innovation Centre, Cambridge Science Park, Cambridge, CB4 0EY, UK
Telephone: +44 (0) 1223 755950 - Fax: +44 (0) 1223 755951 - E-Mail: info@abbexa.com

Coiled-Coil Domain-Containing Protein 61 (CCDC61) Antibody

Catalogue No.: abx026343



The specific function of the protein remains unknown.

Target: CCDC61

Reactivity: Human

Host: Rabbit

Clonality: Polyclonal

Tested Applications: WB, FCM

Recommended dilutions: Optimal dilutions/concentrations should be determined by the end user.

Immunogen: Human CCDC61.

Purification: Peptide Affinity Purified Rabbit Polyclonal Antibody.

Isotype: IgG

Conjugation: Unconjugated

Specificity: This CCDC61 antibody is generated from rabbits immunized with a KLH conjugated synthetic peptide between 36-65 amino acids from the N-terminal region of human CCDC61.

Abbexa Ltd, Innovation Centre, Cambridge Science Park, Cambridge, CB4 0EY, UK
Telephone: +44 (0) 1223 755950 - Fax: +44 (0) 1223 755951 - E-Mail: info@abbexa.com

Storage: Aliquot and store at -20 °C. Avoid repeated freeze/thaw cycles.

Swiss Prot: [Q9Y6R9](#)

Gene Symbol: CCDC61

Buffer: PBS with 0.09% (W/V) sodium azide. This antibody is purified through a protein A column, followed by peptide affinity purification.

Note: This product is for research use only.