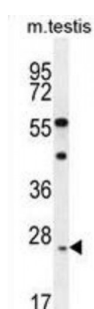
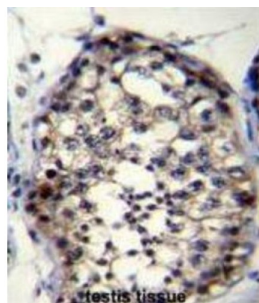


Abbexa Ltd, Innovation Centre, Cambridge Science Park, Cambridge, CB4 0EY, UK
Telephone: +44 (0) 1223 755950 - Fax: +44 (0) 1223 755951 - E-Mail: info@abbexa.com

Ropporin-1-Like Protein (ROPN1L) Antibody

Catalogue No.: abx026470



The protein encoded by this gene is a sperm protein, which interacts with A-kinase anchoring protein, AKAP3, through the amphipathic helix region of AKAP3. Type II regulatory subunit of cAMP-dependent protein kinase (PKARII) also binds to this helix domain of AKAP3, which allows PKARII to be targeted to specific subcellular compartments. It is suggested that sperm contains several proteins that bind to AKAPs in a manner similar to PKARII, and this encoded protein may be one of them.

Target: ROPN1L

Reactivity: Mouse

Host: Rabbit

Clonality: Polyclonal

Tested Applications: WB, IHC

Recommended dilutions: Optimal dilutions/concentrations should be determined by the end user.

Immunogen: Human ROPN1L.

Purification: Peptide Affinity Purified Rabbit Polyclonal Antibody.

Isotype: IgG

Conjugation: Unconjugated

Abbexa Ltd, Innovation Centre, Cambridge Science Park, Cambridge, CB4 0EY, UK
Telephone: +44 (0) 1223 755950 - Fax: +44 (0) 1223 755951 - E-Mail: info@abbexa.com

Specificity:	This ROPN1L antibody is generated from rabbits immunized with a KLH conjugated synthetic peptide between 32-60 amino acids from the N-terminal region of human ROPN1L.
Storage:	Aliquot and store at -20 °C. Avoid repeated freeze/thaw cycles.
Swiss Prot:	<u>Q96C74</u>
Buffer:	PBS with 0.09% (W/V) sodium azide. This antibody is purified through a protein A column, followed by peptide affinity purification.
Note:	This product is for research use only.