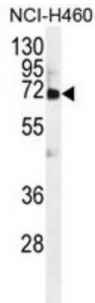


Von Willebrand Factor A Domain Containing Protein 2 (VWA2) Antibody

Catalogue No.: abx026510



VWA2, also named as AMACO and CCSP2, is a novel candidate serological marker of colon neoplasia. VWA2 is found in the media of various established cell lines of both fibroblast and epithelial origin.

Target: VWA2

Reactivity: Human

Host: Rabbit

Clonality: Polyclonal

Tested Applications: WB

Recommended dilutions: Optimal dilutions/concentrations should be determined by the end user.

Immunogen: Human VWA2.

Purification: Peptide Affinity Purified Rabbit Polyclonal Antibody.

Isotype: IgG

Conjugation: Unconjugated

Specificity: This VWA2 antibody is generated from rabbits immunized with a KLH conjugated synthetic peptide between 44-72 amino acids from the N-terminal region of human VWA2.

Storage: Aliquot and store at -20 °C. Avoid repeated freeze/thaw cycles.

Swiss Prot: [Q5GFL6](#)

Buffer: PBS with 0.09% (W/V) sodium azide. This antibody is purified through a protein A column, followed by peptide affinity purification.

Abbexa Ltd, Innovation Centre, Cambridge Science Park, Cambridge, CB4 0EY, UK
Telephone: +44 (0) 1223 755950 - Fax: +44 (0) 1223 755951 - E-Mail: info@abbexa.com

Note: This product is for research use only.