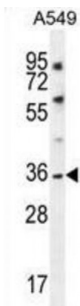
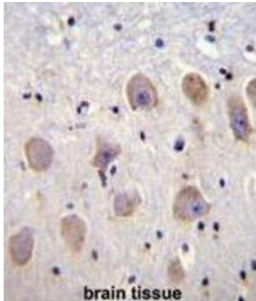


## Potassium Two Pore Domain Channel Subfamily K Member 1 (KCNK1) Antibody

Catalogue No.: abx026641



This gene encodes one of the members of the superfamily of potassium channel proteins containing two pore-forming P domains. The product of this gene has not been shown to be a functional channel, however, it may require other non-pore-forming proteins for activity.

**Target:** KCNK1**Reactivity:** Human**Host:** Rabbit**Clonality:** Polyclonal**Tested Applications:** WB, IHC**Recommended dilutions:** Optimal dilutions/concentrations should be determined by the end user.**Immunogen:** Human KCNK1.**Purification:** Peptide Affinity Purified Rabbit Polyclonal Antibody.**Isotype:** IgG**Conjugation:** Unconjugated

Abbexa Ltd, Innovation Centre, Cambridge Science Park, Cambridge, CB4 0EY, UK  
Telephone: +44 (0) 1223 755950 - Fax: +44 (0) 1223 755951 - E-Mail: [info@abbexa.com](mailto:info@abbexa.com)

- Specificity:** This KCNK1 antibody is generated from rabbits immunized with a KLH conjugated synthetic peptide between 293-320 amino acids from the C-terminal region of human KCNK1.
- Storage:** Aliquot and store at -20 °C. Avoid repeated freeze/thaw cycles.
- Swiss Prot:** [O00180](#)
- Gene Symbol:** KCNK1
- Buffer:** PBS with 0.09% (W/V) sodium azide. This antibody is purified through a protein A column, followed by peptide affinity purification.
- Note:** This product is for research use only.