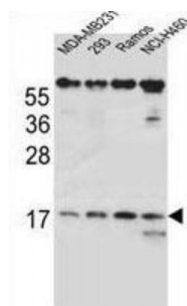


Abbexa Ltd, Innovation Centre, Cambridge Science Park, Cambridge, CB4 0EY, UK
Telephone: +44 (0) 1223 755950 - Fax: +44 (0) 1223 755951 - E-Mail: info@abbexa.com

T-Cell Receptor Beta Chain V Region CTL-L17 / TCRB (TRBV7-9) Antibody

Catalogue No.: abx026649



The receptors on T cells consist of immunoglobulin like integral membrane glycoproteins containing 2 polypeptide subunits, alpha and beta, of similar molecular weight, 40 to 55 kD in the human. Like the immunoglobulins of the B cells, each T cell receptor subunit has, external to the cell membrane, an N terminal variable domain and a C terminal constant domain. T cell receptors recognise foreign antigens which have been processed as small peptides and bound to major histocompatibility complex molecules at the surface of antigen presenting cells. Each T cell receptor is a dimer consisting of one alpha and one beta chain or one delta and one gamma chain. In a single cell, the T cell receptor loci are rearranged and expressed in the order delta, gamma, beta, and alpha. If both delta and gamma rearrangements produce functional chains, the cell expresses delta and gamma. If not, the cell proceeds to rearrange the beta and alpha loci.

Target: TCRB

Reactivity: Human

Host: Rabbit

Clonality: Polyclonal

Tested Applications: WB

Recommended dilutions: Optimal dilutions/concentrations should be determined by the end user.

Immunogen: Human TCRB.

Purification: Peptide Affinity Purified Rabbit Polyclonal Antibody.

Isotype: IgG

Conjugation: Unconjugated

Specificity: This TCRB antibody is generated from rabbits immunized with a KLH conjugated synthetic peptide between 67-94 amino acids from the Central region of human TCRB.

Abbexa Ltd, Innovation Centre, Cambridge Science Park, Cambridge, CB4 0EY, UK
Telephone: +44 (0) 1223 755950 - Fax: +44 (0) 1223 755951 - E-Mail: info@abbexa.com

Storage: Aliquot and store at -20 °C. Avoid repeated freeze/thaw cycles.

Swiss Prot: [P04435](#)

Buffer: PBS with 0.09% (W/V) sodium azide. This antibody is purified through a protein A column, followed by peptide affinity purification.

Note: This product is for research use only.