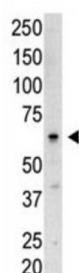
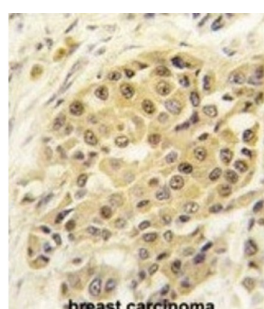
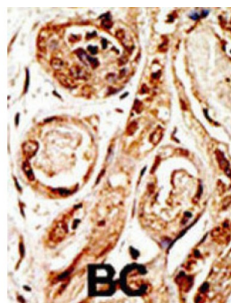


Abbexa Ltd, Innovation Centre, Cambridge Science Park, Cambridge, CB4 0EY, UK  
Telephone: +44 (0) 1223 755950 - Fax: +44 (0) 1223 755951 - E-Mail: [info@abbexa.com](mailto:info@abbexa.com)

## SUMO1/Sentrin/SMT3 Specific Peptidase 3 (SEN3) Antibody

Catalogue No.: abx026748



SEN3 releases SUMO2 and SUMO3 monomers from sumoylated substrates, but has only weak activity against SUMO1 conjugates. This protein deconjugates SUMO2 from MEF2D, which increases its transcriptional activation capability.

**Target:** SEN3

**Reactivity:** Human

**Host:** Rabbit

**Clonality:** Polyclonal

**Tested Applications:** WB, IHC

**Recommended dilutions:** Optimal dilutions/concentrations should be determined by the end user.

**Immunogen:** Human SEN3.

Abbexa Ltd, Innovation Centre, Cambridge Science Park, Cambridge, CB4 0EY, UK  
Telephone: +44 (0) 1223 755950 - Fax: +44 (0) 1223 755951 - E-Mail: [info@abbexa.com](mailto:info@abbexa.com)

|                      |   |
|----------------------|---|
| <b>Purification:</b> | Purified Rabbit Polyclonal Antibody.  |
| <b>Isotype:</b>      | IgG   |
| <b>Conjugation:</b>  | Unconjugated  |
| <b>Specificity:</b>  | This SENP3 antibody is generated from rabbits immunized with a KLH conjugated synthetic peptide between 1-30 amino acids from the N-terminal region of human SENP3.                         |
| <b>Storage:</b>      | Aliquot and store at -20 °C. Avoid repeated freeze/thaw cycles.   |
| <b>Swiss Prot:</b>   | <a href="#"><u>Q9H4L4</u></a>   |
| <b>Buffer:</b>       | PBS with 0.09% (W/V) sodium azide. This antibody is purified through a protein G column, eluted with high and low pH buffers and neutralized immediately, followed by dialysis against PBS. |
| <b>Note:</b>         | This product is for research use only.  |