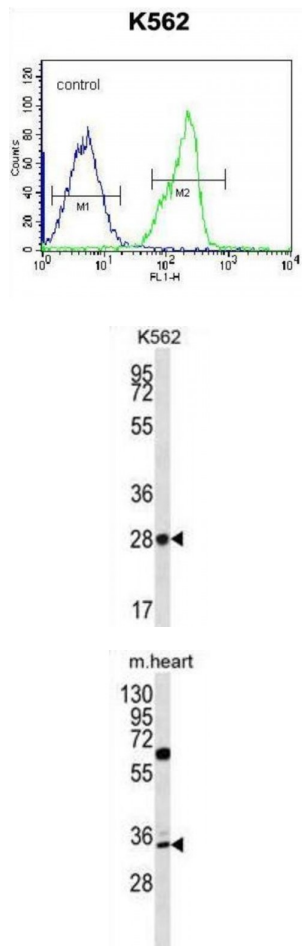


Abbexa Ltd, Innovation Centre, Cambridge Science Park, Cambridge, CB4 0EY, UK  
Telephone: +44 (0) 1223 755950 - Fax: +44 (0) 1223 755951 - E-Mail: [info@abbexa.com](mailto:info@abbexa.com)

## Zinc Finger Protein 146 (ZNF146) Antibody

Catalogue No.: abx026773



The ZNF146 protein is a 33 kDa Kruppel protein, composed solely of 10 zinc finger motifs. ZNF146 overexpression in tumours may alter the balance between hRap1 and other telomeric proteins; therefore ZNF146 function may be linked to telomere regulation. ZNF146 is strongly overexpressed in many pancreas and colorectal cancers. Increased gene copy numbers are detected in 3 of 12 tumor cell lines and 2 of 12 primary pancreatic carcinomas. ZNF146 is overexpressed in 80% of colorectal cancers.

<b>Target:</b>	ZNF146
<b>Reactivity:</b>	Human, Mouse
<b>Host:</b>	Rabbit
<b>Clonality:</b>	Polyclonal
<b>Tested Applications:</b>	WB, FCM

Abbexa Ltd, Innovation Centre, Cambridge Science Park, Cambridge, CB4 0EY, UK  
Telephone: +44 (0) 1223 755950 - Fax: +44 (0) 1223 755951 - E-Mail: [info@abbexa.com](mailto:info@abbexa.com)

**Recommended dilutions:** Optimal dilutions/concentrations should be determined by the end user.

**Immunogen:** Human ZNF146.

**Purification:** Peptide Affinity Purified Rabbit Polyclonal Antibody.

**Isotype:** IgG

**Conjugation:** Unconjugated

**Specificity:** This ZNF146 antibody is generated from rabbits immunized with a KLH conjugated synthetic peptide between 17-45 amino acids from the N-terminal region of human ZNF146.

**Storage:** Aliquot and store at -20 °C. Avoid repeated freeze/thaw cycles.

**Swiss Prot:** [Q15072](#)

**Buffer:** PBS with 0.09% (W/V) sodium azide. This antibody is purified through a protein A column, followed by peptide affinity purification.

**Note:** This product is for research use only.