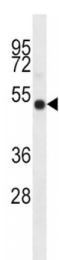
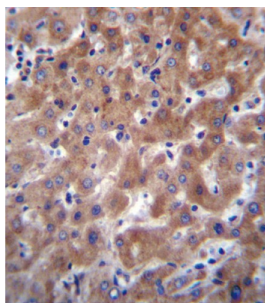


Abbexa Ltd, Innovation Centre, Cambridge Science Park, Cambridge, CB4 0EY, UK
Telephone: +44 (0) 1223 755950 - Fax: +44 (0) 1223 755951 - E-Mail: info@abbexa.com

I23O2 Antibody

Catalogue No.: abx026792



Along with the enzymes encoded by the INDO (MIM 147435) and TDO2 (MIM 191070) genes, the enzyme encoded by the INDOL1 gene metabolizes tryptophan in the kynurenine pathway (Ball et al., 2007 [PubMed 17499941]).

Target: I23O2

Reactivity: Human

Host: Rabbit

Clonality: Polyclonal

Tested Applications: WB, IHC

Recommended dilutions: Optimal dilutions/concentrations should be determined by the end user.

Immunogen: Human I23O2.

Purification: Peptide Affinity Purified Rabbit Polyclonal Antibody.

Isotype: IgG

Conjugation: Unconjugated

Abbexa Ltd, Innovation Centre, Cambridge Science Park, Cambridge, CB4 0EY, UK
Telephone: +44 (0) 1223 755950 - Fax: +44 (0) 1223 755951 - E-Mail: info@abbexa.com

Specificity:	This I23O2 antibody is generated from rabbits immunized with a KLH conjugated synthetic peptide between 267-295 amino acids from the C-terminal region of human I23O2.
Storage:	Aliquot and store at -20 °C. Avoid repeated freeze/thaw cycles.
Swiss Prot:	<u>Q6ZQW0</u>
Gene Symbol:	I23O2
Buffer:	PBS with 0.09% (W/V) sodium azide. This antibody is purified through a protein A column, followed by peptide affinity purification.
Note:	This product is for research use only.