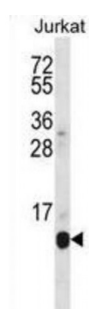
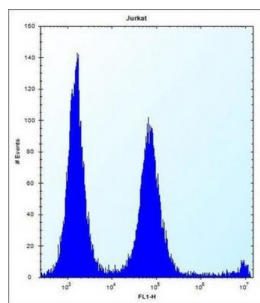


Abbexa Ltd, Innovation Centre, Cambridge Science Park, Cambridge, CB4 0EY, UK
Telephone: +44 (0) 1223 755950 - Fax: +44 (0) 1223 755951 - E-Mail: info@abbexa.com

DNA-Directed RNA Polymerase II Subunit RPB7 (POLR2G) Antibody

Catalogue No.: abx026827



This gene encodes the seventh largest subunit of RNA polymerase II, the polymerase responsible for synthesizing messenger RNA in eukaryotes. The protein functions in transcription initiation, and is also thought to help stabilize transcribing polymerase molecules during elongation.

Target: POLR2G

Reactivity: Human

Host: Rabbit

Clonality: Polyclonal

Tested Applications: WB, FCM

Recommended dilutions: Optimal dilutions/concentrations should be determined by the end user.

Immunogen: Human POLR2G.

Purification: Peptide Affinity Purified Rabbit Polyclonal Antibody.

Isotype: IgG

Conjugation: Unconjugated

Abbexa Ltd, Innovation Centre, Cambridge Science Park, Cambridge, CB4 0EY, UK
Telephone: +44 (0) 1223 755950 - Fax: +44 (0) 1223 755951 - E-Mail: info@abbexa.com

Specificity:	This POLR2G antibody is generated from rabbits immunized with a KLH conjugated synthetic peptide between 126-153 amino acids from the C-terminal region of human POLR2G.
Storage:	Aliquot and store at -20 °C. Avoid repeated freeze/thaw cycles.
Swiss Prot:	<u>P62487</u>
Buffer:	PBS with 0.09% (W/V) sodium azide. This antibody is purified through a protein A column, followed by peptide affinity purification.
Note:	This product is for research use only.