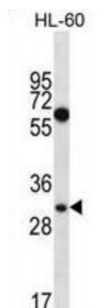


Abbexa Ltd, Innovation Centre, Cambridge Science Park, Cambridge, CB4 0EY, UK
Telephone: +44 (0) 1223 755950 - Fax: +44 (0) 1223 755951 - E-Mail: info@abbexa.com

Mediator Complex Subunit 8 (MED8) Antibody

Catalogue No.: abx026938



This gene encodes a protein that is one of more than 20 subunits of the mediator complex, first identified in *S. cerevisiae*, that is required for activation of transcription. The product of this gene also interacts with elongins B and C, and CUL2 and RBX1, to reconstitute a ubiquitin ligase. Two alternative transcripts encoding different isoforms have been described.

Target: Mediator complex subunit 8

Reactivity: Human

Host: Rabbit

Clonality: Polyclonal

Tested Applications: WB

Recommended dilutions: Optimal dilutions/concentrations should be determined by the end user.

Immunogen: Human MED8.

Purification: Peptide Affinity Purified Rabbit Polyclonal Antibody.

Isotype: IgG

Conjugation: Unconjugated

Specificity: This MED8 antibody is generated from rabbits immunized with a KLH conjugated synthetic peptide between 95-122 amino acids from the Central region of human MED8.

Storage: Aliquot and store at -20 °C. Avoid repeated freeze/thaw cycles.

Swiss Prot: [Q96G25](#)

Buffer: PBS with 0.09% (W/V) sodium azide. This antibody is purified through a protein A column, followed by peptide affinity purification.

Note: This product is for research use only.