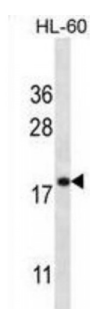
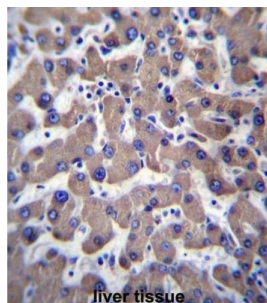


Abbexa Ltd, Innovation Centre, Cambridge Science Park, Cambridge, CB4 0EY, UK  
Telephone: +44 (0) 1223 755950 - Fax: +44 (0) 1223 755951 - E-Mail: [info@abbexa.com](mailto:info@abbexa.com)

## Transmembrane Protein 70, Mitochondrial (TMM70) Antibody

Catalogue No.: abx027148



This gene likely encodes a mitochondrial membrane protein. The encoded protein may play a role in biogenesis of mitochondrial ATP synthase. Mutations in this gene have been associated with neonatal mitochondrial encephalomyopathy due to ATP synthase deficiency. Alternatively spliced transcript variants have been described.

**Target:** TMM70

**Reactivity:** Human

**Host:** Rabbit

**Clonality:** Polyclonal

**Tested Applications:** WB, IHC

**Recommended dilutions:** Optimal dilutions/concentrations should be determined by the end user.

**Immunogen:** Human TMM70.

**Purification:** Peptide Affinity Purified Rabbit Polyclonal Antibody.

**Isotype:** IgG

**Conjugation:** Unconjugated

Abbexa Ltd, Innovation Centre, Cambridge Science Park, Cambridge, CB4 0EY, UK  
Telephone: +44 (0) 1223 755950 - Fax: +44 (0) 1223 755951 - E-Mail: [info@abbexa.com](mailto:info@abbexa.com)

<b>Specificity:</b>	This TMM70 antibody is generated from rabbits immunized with a KLH conjugated synthetic peptide between 231-260 amino acids from the C-terminal region of human TMM70.
<b>Storage:</b>	Aliquot and store at -20 °C. Avoid repeated freeze/thaw cycles.
<b>Swiss Prot:</b>	<a href="#"><u>Q9BUB7</u></a>
<b>Gene Symbol:</b>	TMM70
<b>Buffer:</b>	PBS with 0.09% (W/V) sodium azide. This antibody is purified through a protein A column, followed by peptide affinity purification.
<b>Note:</b>	This product is for research use only.