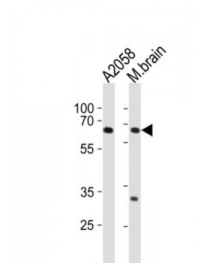


Abbexa Ltd, Innovation Centre, Cambridge Science Park, Cambridge, CB4 0EY, UK
Telephone: +44 (0) 1223 755950 - Fax: +44 (0) 1223 755951 - E-Mail: info@abbexa.com

Leucine Zipper Tumor Suppressor 1 (LZTS1) Antibody

Catalogue No.: abx027187



This gene encodes a tumor suppressor protein that is ubiquitously expressed in normal tissues. In uveal melanomas, expression of this protein is silenced in rapidly metastasizing and metastatic tumor cells but has normal expression in slowly metastasizing or nonmetastasizing tumor cells. This protein may have a role in cell-cycle control by interacting with the Cdk1/cyclinB1 complex. This gene is located on chromosomal region 8p22. Loss of heterozygosity (LOH) in the 8p arm is a common characteristic of many types of cancer.

Target: LZTS1

Reactivity: Human, Mouse

Host: Rabbit

Clonality: Polyclonal

Tested Applications: WB

Recommended dilutions: Optimal dilutions/concentrations should be determined by the end user.

Immunogen: Human LZTS1.

Purification: Peptide Affinity Purified Rabbit Polyclonal Antibody.

Isotype: IgG

Conjugation: Unconjugated

Specificity: This LZTS1 antibody is generated from rabbits immunized with a KLH conjugated synthetic peptide between 77-105 amino acids from the N-terminal region of human LZTS1.

Storage: Aliquot and store at -20 °C. Avoid repeated freeze/thaw cycles.

Swiss Prot: [Q9Y250](#)

Abbexa Ltd, Innovation Centre, Cambridge Science Park, Cambridge, CB4 0EY, UK
Telephone: +44 (0) 1223 755950 - Fax: +44 (0) 1223 755951 - E-Mail: info@abbexa.com

Gene Symbol: LZTS1

NCBI Accession: NP_066300.1

Buffer: PBS with 0.09% (W/V) sodium azide. This antibody is purified through a protein A column, followed by peptide affinity purification.

Note: This product is for research use only.