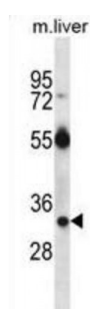
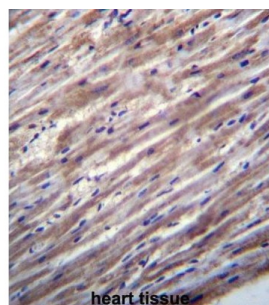


Abbexa Ltd, Innovation Centre, Cambridge Science Park, Cambridge, CB4 0EY, UK  
Telephone: +44 (0) 1223 755950 - Fax: +44 (0) 1223 755951 - E-Mail: [info@abbexa.com](mailto:info@abbexa.com)

## RAS, Dexamethasone-Induced 1 (RASD1) Antibody

Catalogue No.: abx027211



This gene encodes a Ras-related protein that is stimulated by dexamethasone. The exact function of this gene is unknown, but it may play a role in dexamethasone-induced alterations in cell morphology, growth and cell-extracellular matrix interactions. In addition, studies of a similar rat protein suggest that it functions as a novel physiologic nitric oxide (NO) effector. The gene product belongs to the Ras superfamily of small GTPases.

**Target:** RASD1

**Reactivity:** Mouse

**Host:** Rabbit

**Clonality:** Polyclonal

**Tested Applications:** WB, IHC

**Recommended dilutions:** Optimal dilutions/concentrations should be determined by the end user.

**Immunogen:** Human RASD1.

**Purification:** Peptide Affinity Purified Rabbit Polyclonal Antibody.

**Isotype:** IgG

**Conjugation:** Unconjugated

Abbexa Ltd, Innovation Centre, Cambridge Science Park, Cambridge, CB4 0EY, UK  
Telephone: +44 (0) 1223 755950 - Fax: +44 (0) 1223 755951 - E-Mail: [info@abbexa.com](mailto:info@abbexa.com)

<b>Specificity:</b>	This RASD1 antibody is generated from rabbits immunized with a KLH conjugated synthetic peptide between 248-277 amino acids from the C-terminal region of human RASD1.
<b>Storage:</b>	Aliquot and store at -20 °C. Avoid repeated freeze/thaw cycles.
<b>Swiss Prot:</b>	<a href="#"><u>Q9Y272</u></a>
<b>Gene Symbol:</b>	RASD1
<b>Buffer:</b>	PBS with 0.09% (W/V) sodium azide. This antibody is purified through a protein A column, followed by peptide affinity purification.
<b>Note:</b>	This product is for research use only.