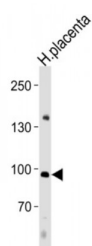
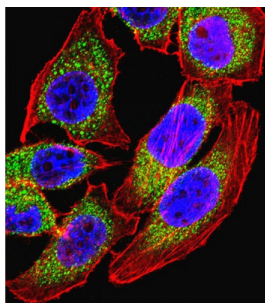


Abbexa Ltd, Innovation Centre, Cambridge Science Park, Cambridge, CB4 0EY, UK
Telephone: +44 (0) 1223 755950 - Fax: +44 (0) 1223 755951 - E-Mail: info@abbexa.com

Nuclear Factor of Activated T Cells 4 (NFATC4) Antibody

Catalogue No.: abx027250



The product of this gene is a member of the nuclear factors of activated T cells DNA-binding transcription complex. This complex consists of at least two components: a preexisting cytosolic component that translocates to the nucleus upon T cell receptor (TCR) stimulation and an inducible nuclear component. Other members of this family of nuclear factors of activated T cells also participate in the formation of this complex. The product of this gene plays a role in the inducible expression of cytokine genes in T cells, especially in the induction of the IL-2 and IL-4. Alternatively spliced transcript variants encoding different isoforms have been noted for this gene. [provided by RefSeq].

Target: NFATC4

Reactivity: Human

Host: Rabbit

Clonality: Polyclonal

Tested Applications: WB, IF/ICC

Recommended dilutions: Optimal dilutions/concentrations should be determined by the end user.

Immunogen: Human NFATC4.

Purification: Peptide Affinity Purified Rabbit Polyclonal Antibody.

Isotype: IgG

Abbexa Ltd, Innovation Centre, Cambridge Science Park, Cambridge, CB4 0EY, UK
Telephone: +44 (0) 1223 755950 - Fax: +44 (0) 1223 755951 - E-Mail: info@abbexa.com

Conjugation: Unconjugated

Specificity: This NFATC4 antibody is generated from rabbits immunized with a KLH conjugated synthetic peptide between 744-773 amino acids from the C-terminal region of human NFATC4.

Storage: Aliquot and store at -20 °C. Avoid repeated freeze/thaw cycles.

Swiss Prot: [Q14934](#)

NCBI Accession: NP_001129494.1, NP_001185894.1, NP_001185895.1, NP_001185896.1, NP_004545.2

Buffer: PBS with 0.09% (W/V) sodium azide. This antibody is purified through a protein A column, followed by peptide affinity purification.

Note: This product is for research use only.